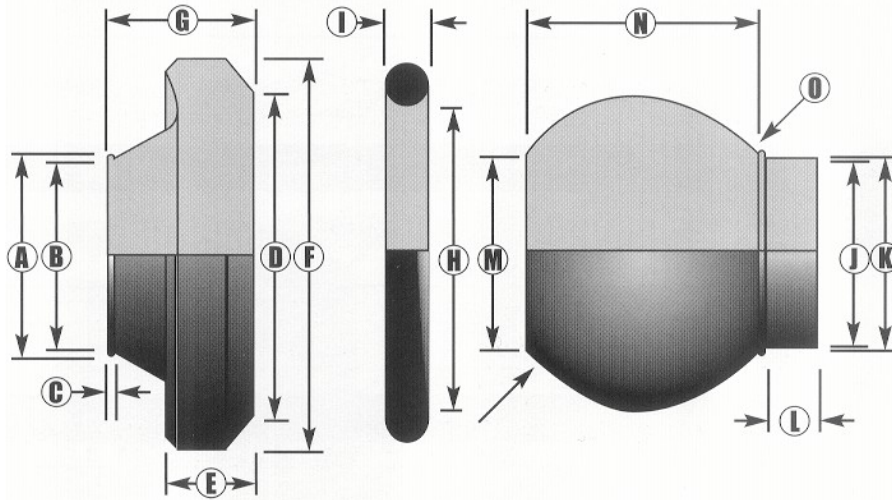


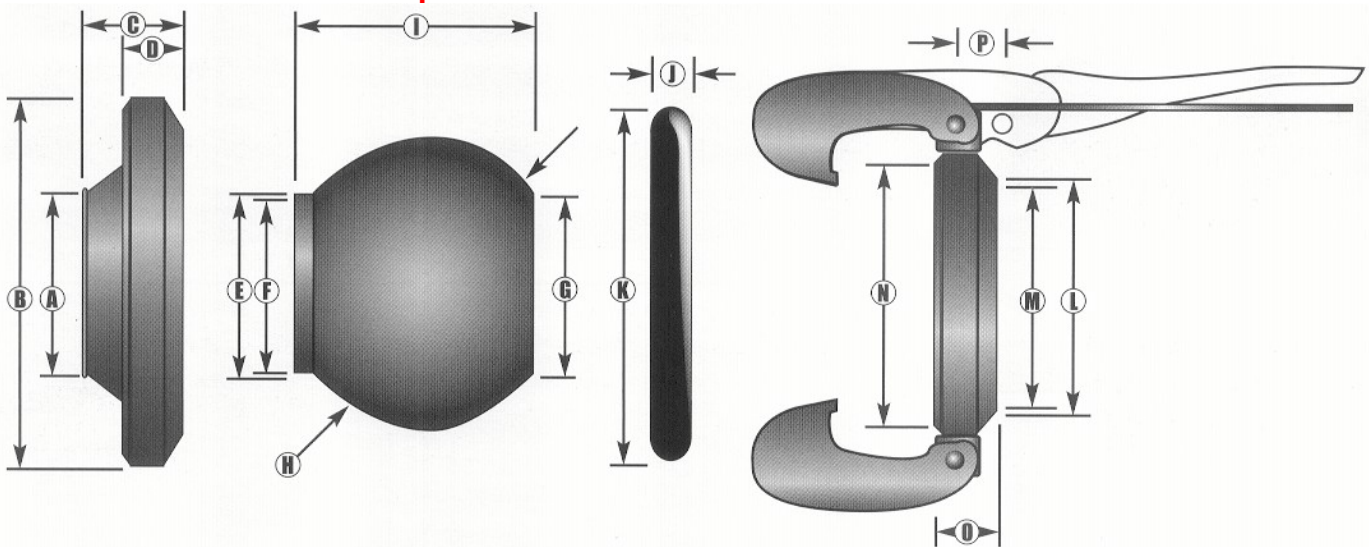
300 Series Steel Weld-On Couplers



specs.	A	B	C	D	E	F	G	H	I	J	K	L	M	N	O
2" Weld-On	2.01	1.91	0.24	2.83	0.67	3.27	1.22	2.44	0.37	1.91	2.01	0.28	1.97	2.17	2.76
3" Weld-On	3.07	2.99	0.28	3.86	0.87	4.57	1.46	3.48	0.51	2.99	3.07	0.55	3.19	2.87	3.86
4" Weld-On	4.37	4.25	0.47	5.79	1.10	6.50	2.32	5.20	0.59	4.25	4.37	0.59	4.41	4.21	5.71
5" Weld-On	5.39	5.20	0.47	6.42	1.34	7.52	2.13	5.98	0.71	5.20	5.39	0.67	5.39	3.78	6.26
6" Weld-On	6.42	6.22	0.59	7.17	1.34	8.31	2.05	6.69	0.75	6.22	6.42	0.75	6.10	4.06	7.09
8" Weld-On	7.95	7.64	0.71	9.09	1.34	10.51	2.99	8.66	0.75	7.64	7.87	0.67	7.87	5.00	9.06

Specifications to 1/100th of an inch • Specifications Subject to Change

200 Series Steel Weld-On Couplers



specs.	A	B	C	D	E	F	G	H	I	J	K	L	M	N	O	P
10" Weld-On	11.14	14.09	2.40	1.42	9.57	9.25	9.96	11.81	6.73	0.86	11.06	9.72	9.37	11.89	4.33	1.38
12" Weld-On	13.35	17.56	2.76	1.69	12.01	11.65	11.97	14.57	8.35	0.93	13.98	12.20	11.85	14.65	4.92	1.65

Specifications to 1/100th of an inch • Specifications Subject to Change.