

**SERIES 560 GX (version 2000)**



POS.	Page	Description	N.Pieces	Item Number	Notes
1	1/1	Frame / Lifting	1	5600005	
2	1/1	Bar / Shut-off	1	5600006	
3	1/1	Spring / Shut-off Bar	1	5700013	
4	1/1	Cable / Shut-off (specify machine series)	1	5500025	rif.560
5	1/1	Jack / Lifting Frame	1	5600023	
6	1/1	Roller / Fork PVC (specify machine series)	1	7000059	rif.560
7	1/1	Finger / Cursor	1	4000018	
8	1/1	Circlip I 30	1	4000113	
9	1/1	Zirk / Grease M6	2	5800112	
10	1/1	Fork / Hoseguide	1	5600022	
11	1/1	Cursor	1	4000019	
12	1/1	Bar / Cursor	1	5600021	
13	1/1	Bar / Overwind	1	5600011	
14	1/1	Spring / Overwind Bar	1	5700013	
15	1/1	Rod / Compensation By-pass	1	5600034	
16	1/1	Bearing UCP 207	1	5500111	
17	1/1	Sprocket 1/2" S (specify # of teeth)	2	5500037	z...
18	1/1	Bearing UCFL 206	2	5500104	
19	1/1	Pin / Stabilizer Leg	2	5800042	
20	1/1	Chain 1/2"	1	5800119	2.34 meters
21	1/1	Link / Master 1/2"	1	5800120	
22	1/1	Cover / Primary Chain ABS	1	5600024	
23	1/1	Leg / Stabilizer	2	5600007	
24	1/1	Shaft / Fork Roller PVC	1	5500049	
25	1/1	Tool / P.T.O.	1	5800041	
26	1/1	Pawl / Non-Return (unfinished)	1	5600029	gr
27	1/1	Pin / Turntable Locking	1	5800043	
28	1/1	Bearing / Turntable	1	5500107	
29	1/1	Chassis (until serial # 56060)	1	5600003	f.56060
		Chassis (from serial # 56061)	1	5601003	d.56061
30	1/1	Axle 4 lug	1	5600105	
31	1/1	Wheel 4 lug (specify tire size)	2	5600107	pn
32	1/1	Coupler Bauer Ø 76 M	2	5701109	
33	1/1	Clamp Ø 63 (60-67)	4	5500122	
		Clamp Ø 70 (67-73)	4	5500121	
		Clamp Ø 75 (73-79)	4	5500113	
34	1/1	Hose / PET (specify PET hose size)	1	TUBPOL...	Ø PE
35	1/1	Insert / Hose (specify PET hose size)	1	5500033	Ø PE
36	1/1	Clamp / Cable Ø 4	1	5500131	
37	1/1	Reel / Complete (supplied with POS 38)	1	5600001	c.38
38	1/1	Gear / Reel Drive (unfinished)	7	5600013	gr
39	1/1	Guard / Reel Gear (kit)	1	5600032	
40	1/1	Eye / Towing (until serial # 56060)	1	5600004	f.56060
		Eye / Towing (from serial # 56061)	1	5601004	d.56061
41	1/1	Jack / Chassis	1	5600009	
42	1/1	Tachometer / VDO/Euro (until serial # 56010)	1	TACHVDOEURO	v.pag.22-f.56010.
43	1/1	Cap 22x4 (until serial # 56011)	1	5800150	F.56011

**SERIES 560 GX (version 2000)**

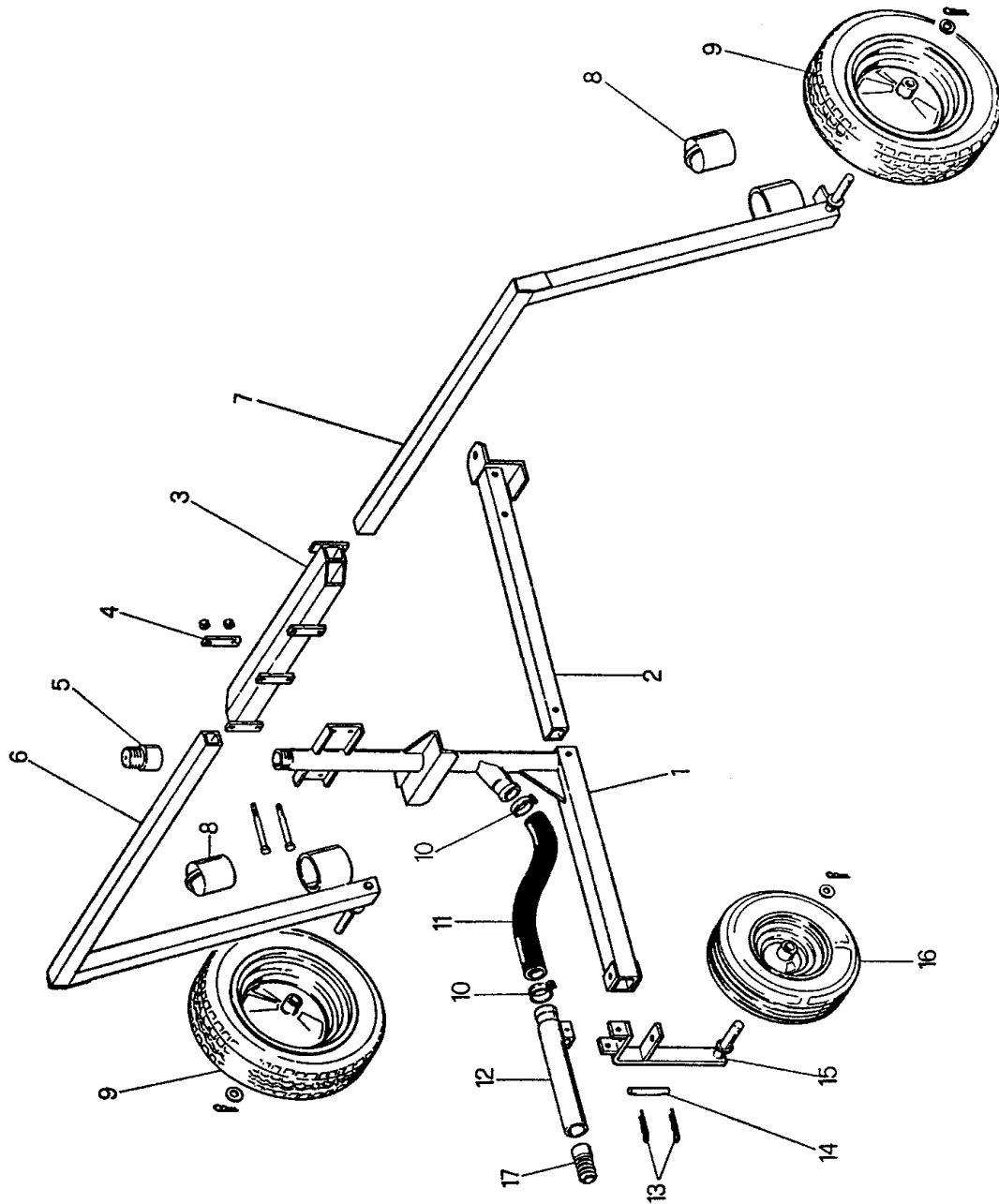


POS.	Page	Description	N.Pieces	Item Number	Notes
44	1/1	Tachometer / VDO/Sprint (from serial # 56011)	1	TACHVDOSPRINT	v.pag.22-d.56011.
45	1/1	Bushing SS	1	5600028	
46	1/1	Anchor / Shut-off Cable By-pass	1	5800058	
47	1/1	Magnet 8x22x7 (until serial # 56010)	1	5800140	f.56010
48	1/1	Sprocket / Drive Z10 complete 1"	1	5500016	
49	1/1	Spacer / Turbine (until serial # 56013)	1	5600036	f.56013
50	1/1	Gearbox Comer D 743 A	1	5600101	v.pag.15/2
51	1/1	Plug M 3/8"	1	5500103	
52	1/1	Frame / Turret	1	5600002	
53	1/1	Band / Comer Brake (comer 2.744.7006.00)	1	5800143	i2.744.7006.00
54	1/1	Lever / Drive	1	5600039	
55	1/1	Handle / Drive Lever 25x10	1	5800109	
56	1/1	Socket Bauer Ø 76 F (unfinished)	1	5701106	gr
57	1/1	Elbow / Supply with Flange	1	5600025+5500010	
58	1/1	Seal / Ring UM 70.90.10	1	5500106	
59	1/1	Circlip E 70	1	5500110	
60	1/1	Bearing	1	5500108	
61	1/1	Support / Bearing	1	5500011	
62	1/1	Clamp 86-95	2	5800137	
63	1/1	Hose / Rubber 80x93	1	5500102	.425 meters
64	1/1	Bracket / Chassis Axle M10	4	5400113	
65	1/1	Circlip E35	1	5500130	
66	1/1	Gauge / Pressure 0-200psi	1	5800115	
67	1/1	Lever / By-pass Compensation	1	5600035	
68	1/1	Handle / Treaded Ø 25 M6	1	2000105	
69	1/1	Lever / Command By-pass	1	4010021	
70	1/1	Cone / Turbine Inlet	1	5600026	
71	1/1	Cap FNPT 2" zinc	1	5800121	
72	1/1	Ring / Rubber Bauer Ø 76	2	5701111	
73	1/1	Hose / Rubber 80x93	1	5500102	4 meters
74	1/1	Cover / Primary Chain Back	2	5500048	
75	1/1	Clamp 86-95	4	5800137	
76	1/1	Socket 3" x 2"1/2 MNPT	1	5600027	
77	1/1	Cover / Drive	1	5600033	
78	1/1	Screw / Set M5x8	1	4010113	
79	1/1	O-Ring 108	2	5800213	
80	1/1	Shaft / By-pass Valve	1	5600019	
81	1/1	Nut / Hex M5 SS	1	5800211	
82	1/1	Flap / By-pass Valve	1	5600020	
83	1/1	Bolt / Hex TE M5x20 SS	2	5800210	
84	1/1	Gasket / Rubber	1	5600010	
85	1/1	Nozzle / Turbine (specify diameter)	1	5500202	Ø...
86	1/1	Nut / Locking M16 SS	1	5800209	
87	1/1	Impeller / Turbine	1	5600018	
88	1/1	Seal / Mechanical BT PR/FN20	1	8900201	
89	1/1	Support / Turbine	1	5600017	
90	1/1	Bolt / Allen TCEI M8x25 SS	4	8900203	

**SERIES 560 GX (version 2000)**



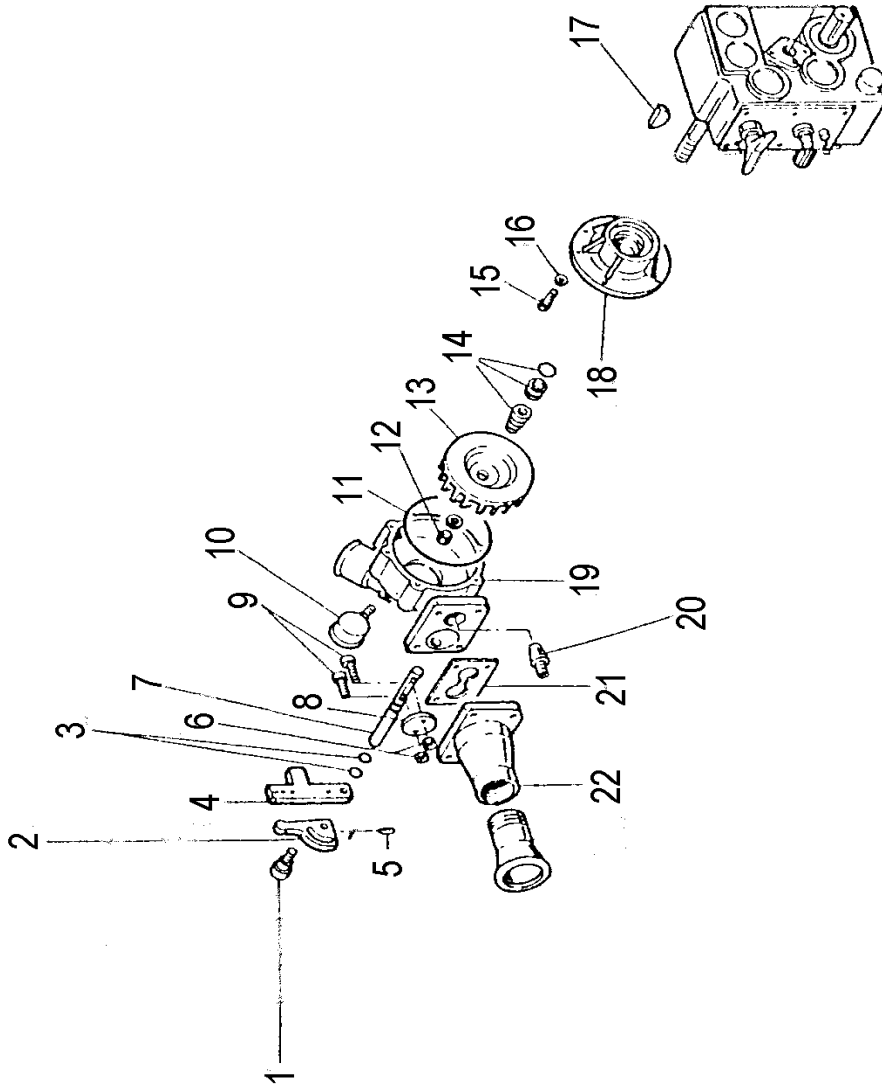
POS.	Page	Description	N.Pieces	Item Number	Notes	
91	1/1	Washer / Locking 8x14	4	8900202		
92	1/1	Key / Woodruff 6x9	1	5600201		
93	1/1	O-Ring 3700	1	5600205		
94	1/1	Body / Turbine	1	5600016		
95	1/1	Nut / Lug	8			
96	1/1	Filter SS 76/80 (optional)	1	5500050	op	
97	1/1	R-Clip Ø 5	2	COOP05AMA		
98	1/1	R-Clip Ø 3	2	COOP03AMA		
99	1/1	Elbow 1/4"x 90° (optional)	1	5800304	op	
100	1/1	Elbow 1/8"x 90° (optional)	1	5800307	op	
101	1/1	Nipple 2"1/2 x 2"MNPT (optional)	1	5800316	op	
102	1/1	Reducer 2"M-2"1/2F (optional)	1	5800315	op	
103	1/1	Valve / 2" Auto Shut-off (optional)	1	5800302	op	
104	1/1	O-Ring (OR 2250)	1	5600106		
79						
80						
81						
82						
83						
84						
85						
86	1/1		Turbine T4 complete	1	TUR560	
87						
88						
89						
90						
91						
92						
93						
94						



## SERIES 550-560 GX TROLLEY



POS.	Page	Description	N.Pieces	Item Number	Notes
1	24	Trolley Body	1	55010175	
2	24	Drawbar	1	55010172	
3	24	Head	1	55010173	
4	24	Leg Bracket	2	55010171	
5	24	Bushing 2"1/2 - 2"F	1	5500132	Ø PE 75
6	24	Left Lag	1	55010176	
7	24	Right Leg	1	55010177	
8	24	Weight 560	2	BILLETTE	.2 meters
9	24	Wheel 4.00x10" Trailer	2	5500129	
10	24	Clamp 67-73	2	5500121	
11	24	Rubber Hose 10 60x70	1	5500112	.75 meters
12	24	Connector PE-Trolley	1	55010174	
13	24	R-Clip Ø 6x40	2	5800205	
14	24	Pin	1	55010179	
15	24	Wheel support	1	55010178	
16	24	Wheel 15.600x6" 4 ply or 4.00x6"	1	5500128	pn
17	24	Barbed Nipple PE	1	5500033	Ø PE
1					
2					
3					
4					
6	24		Trolley Bare 550-560	1	5501017
7					
12					
14					
15					
1÷17	24	Trolley Complete	1	CARR550.1	

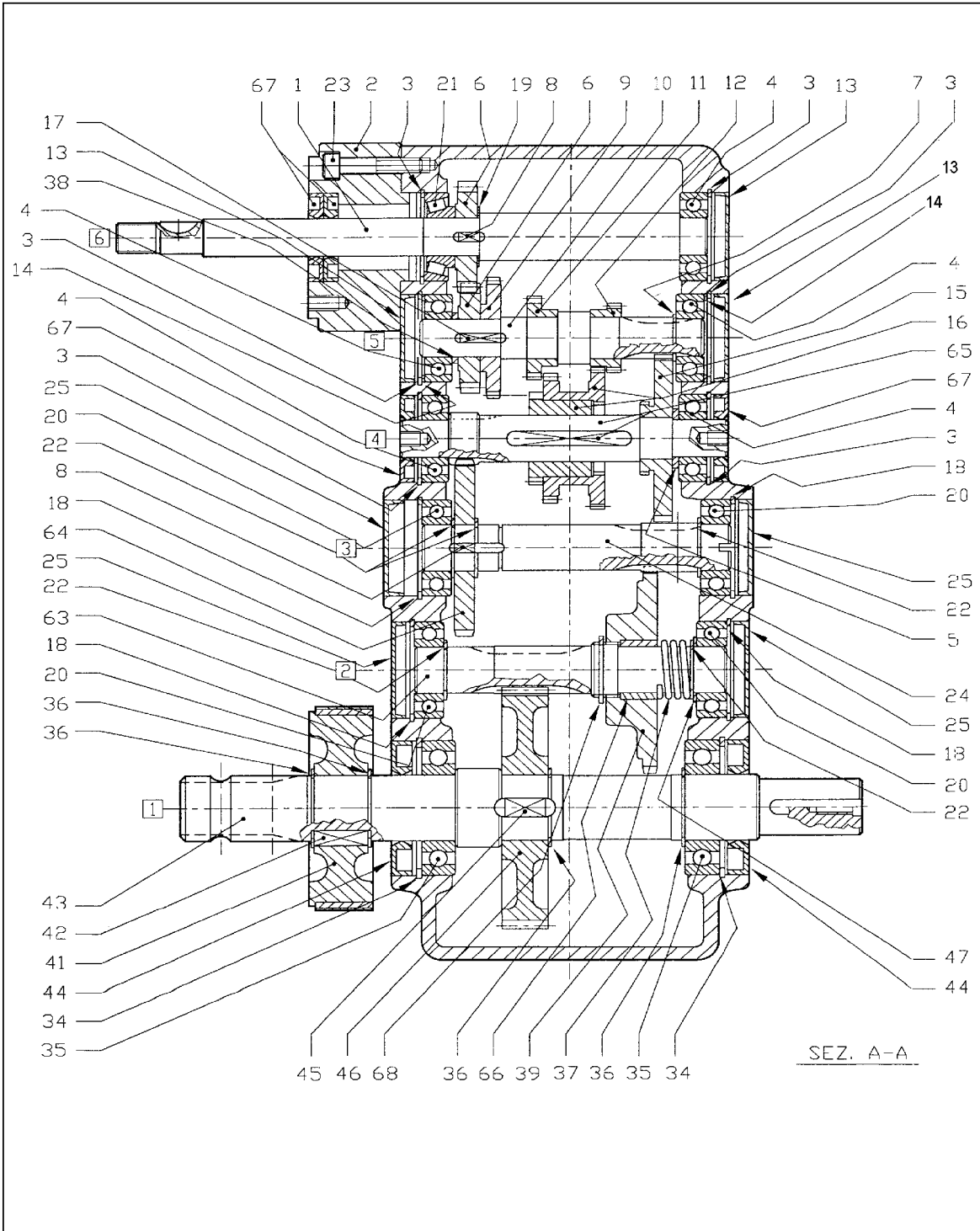


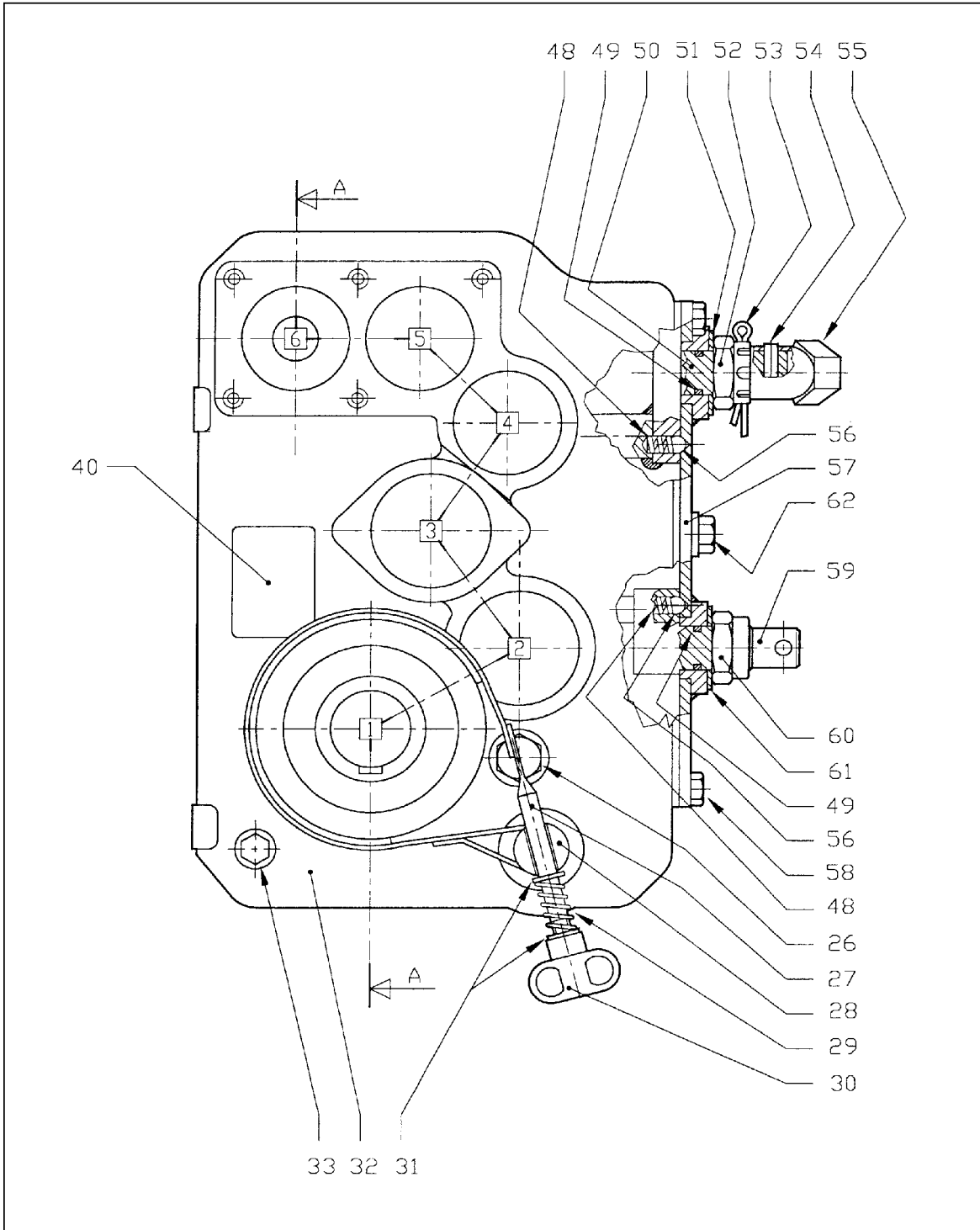
# TURBINE T4



POS.	Page	Description	N.Pieces	Item Number	Notes
1	T4	Threaded Knob M6	1	2000105	
2	T4	By-Pass Lever	1	4010021	
3	T4	O-Ring 108	2	5800213	
4	T4	Command Lever	1	5600035	
5	T4	Set Screw M5x8	1	4010113	
6	T4	Nut S.S. M5	2	5800211	
7	T4	By-Pass Valve Shaft	1	5600019	
8	T4	Flapper	1	5600020	
9	T4	Bolt TE M5x20 S.S.	2	5800210	
10	T4	Pressure Gauge	1	5800115	
11	T4	O-Ring 3700	1	5600205	
12	T4	Nut/Nylock M16 S.S.	1	5800209	
13	T4	Impeller	1	5600018	
14	T4	Mechanical Seal BT PR/FN 20	1	8900201	
15	T4	Bolt TCEI M8x25 S.S.	4	8900203	
16	T4	Copper Washer 8x14	4	8900202	
17	T4	Woodruff Key 6x9	1	5600201	
18	T4	Turbine Cover	1	5600017	
19	T4	Turbine Body	1	5600016	
20	T4	Turbine Nozzle	1	5500202	Ø ...
21	T4	Gasket	1	5600010	
22	T4	Inlet Cone	1	5600026	







**GEARBOX D-743A (9.743.023.00)**

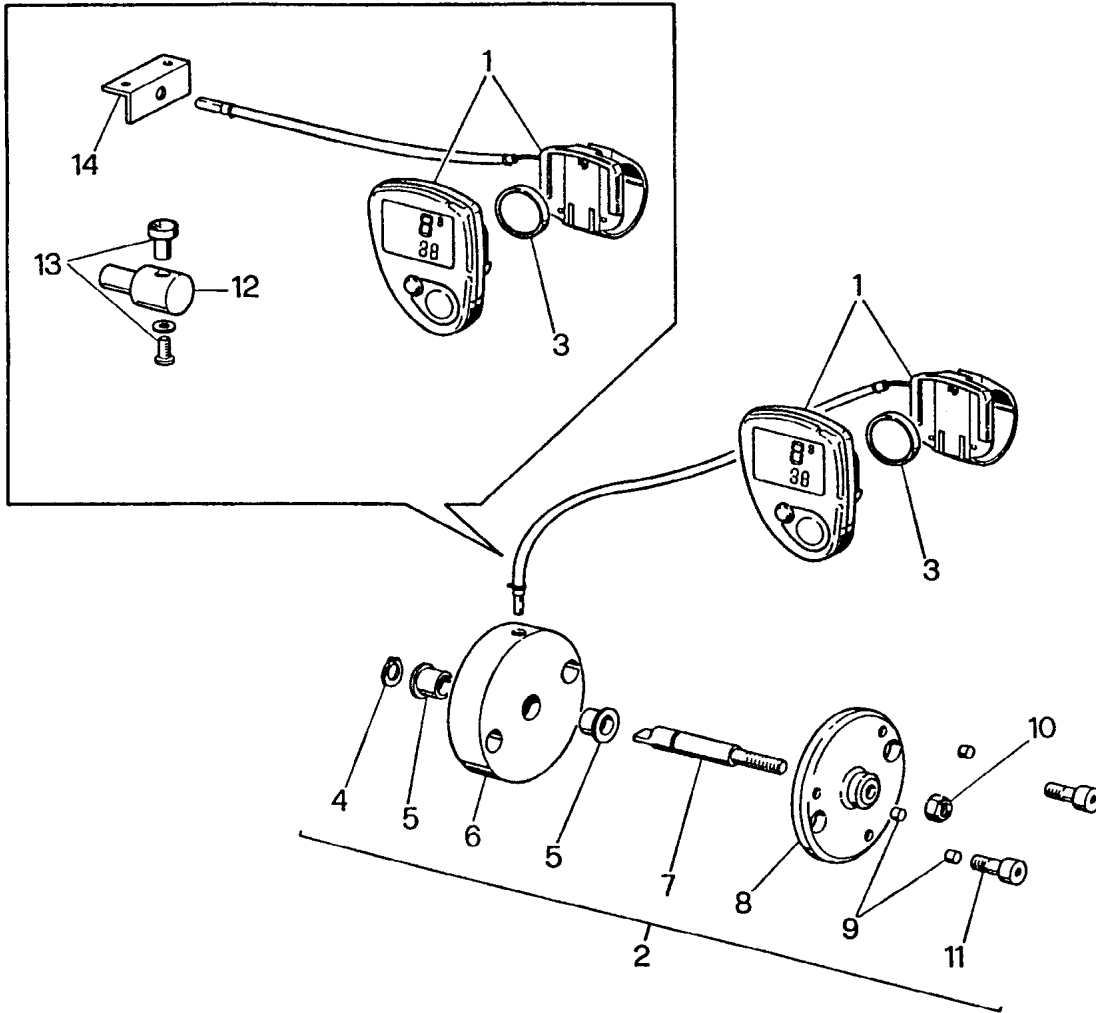


POS.	Page	Description	N.Pieces	Item Number	Notes
1	15/2	Impeller Shaft	1	0.744.2015.00	
2	15/2	Flange	1	0.744.7008.00	
3	15/2	Circlip I47	6	8.5.2.01290	
4	15/2	Bearing 6204	5	8.0.1.00405	
5	15/2	Spacer 32x20.3x2.5	1	0.104.7525.00	
6	15/2	Gear Z=21, M2.5	2	0.744.6018.00	
7	15/2	Circlip E20	1	8.5.1.00261	
8	15/2	Key 5x5x10	2	8.4.1.01511	
9	15/2	Gear Z=35, M1.75	1	0.744.6007.00	
10	15/2	Pinion Shaft Z=12, M1.5	1	0.744.5011.00	
11	15/2	Gear Z=24, M1.75	1	0.744.5015.00	
12	15/2	Gear Z=22, M1.5	1	0.735.5001.00	
13	15/2	Oil Plug 47x7	3	8.7.0.01362	
14	15/2	Spacer 40.3x46.7	2	0.457.7500.00	
15	15/2	Crown Gear Z=58, M1.5	1	0.744.6003.00	
16	15/2	Compound Gear	1	2.744.5007.00	
17	15/2	Key 5x5x20	1	8.4.1.01617	
18	15/2	Circlip I52	4	8.5.2.00038	
19	15/2	Spacer 20.3x32	1	0.104.7500.00	
20	15/2	Bearing 6205	4	8.0.1.00034	
21	15/2	Bearing 30204	1	8.0.9.01591	
22	15/2	Circlip E25	5	8.5.1.00004	
23	15/2	Bolt TCEI M8x40 (8.8)	4	8.1.2.01723	
24	15/2	Pinion Shaft Z=12, M1.75	1	0.743.5012.00	
25	15/2	Oil Plug 52x7	4	8.7.0.00693	
26	15/2	Oil Level Sight Glass	1	8.6.4.00673	
27	15/2	Brake Band	1	2.744.7006.00	
28	15/2	Hinge	1	0.744.7005.00	
29	15/2	Brake Spring	1	0.735.7103.00	
30	15/2	Threaded Knob M8 F	1	8.9.1.01713	
31	15/2	Washer 8.4x14	2	8.3.2.00439	
32	15/2	Casing	1	0.743.0301.00	
33	15/2	Plug 3/8" GAS	1	8.6.5.00006	
34	15/2	Circlip I72	2	8.5.2.00131	
35	15/2	Bearing 6207	2	8.0.1.00870	
36	15/2	Circlip E35	4	8.5.1.00005	
37	15/2	Spring	1	0.743.7102.00	
38	15/2	Spacer 20.9x26.9x4	1	0.744.7104.00	
39	15/2	Crwon Gear Z=62, M1.75	1	0.743.6006.00	
40	15/2	Serial Plate	1	0.124.7101.00	
41	15/2	Brake Drum	1	0.744.7004.00	
42	15/2	Key 10x8x25	1	8.4.1.00232	
43	15/2	P.T.O. Shaft	1	0.743.3002.00	
44	15/2	Oil Seal 35x72x10	2	8.7.3.00055	
45	15/2	Key 10x8x20	1	8.4.1.01342	
46	15/2	Gear Z=62, M2	1	0.743.6000.00	
47	15/2	Spacer 25.2x33.8x1	2	0.743.7510.00	

**GEARBOX D-743A (9.743.023.00)**



POS.	Page	Description	N.Pieces	Item Number	Notes
48	15/2	Spring	2	0.721.7101.00	
49	15/2	O-Ring 3062	2	8.7.6.00191	
50	15/2	4 Speed Lever	1	2.744.7002.00	
51	15/2	Spring Washer 40x20.4x1.5	1	8.5.5.01316	
52	15/2	Castle Nut M20x1.5	1	8.2.2.00997	
53	15/2	Cotter Pin 4x35	1	8.4.7.00760	
54	15/2	Rollpin 5x24	1	8.4.5.00934	
55	15/2	Handle Grip	1	1.721.7002.00	
56	15/2	Ball 5/16" (7.9 mm)	2	8.5.9.00166	
57	15/2	Cover	1	2.743.1312.00	
58	15/2	Bolt M8x18 (8.8)	6	8.1.1.01676	
59	15/2	Lever	1	2.743.7004.00	
60	15/2	Locking Nut M20x1.5	1	0.744.7150.00	
61	15/2	Spacer 32x20.3x1	1	0.104.7510.00	
62	15/2	Plug 1/2" GAS	1	8.6.5.00203	
63	15/2	Pinion Shaft Z=10, M2	1	0.743.5019.00	
64	15/2	Crown Gear Z=53, M1.75	1	0.743.6004.00	
65	15/2	Pinion Shaft with Key	1	2.743.5022.00	
66	15/2	Bushing	1	0.743.7107.00	
67	15/2	Oil Seal 20x47x7	4	8.7.3.01395	
68	15/2	Circlip E29x2	1	8.5.1.02281	



# TACHOMETER VDO EURO/SPRINT



POS.	Page	Description	N.Pieces	Item Number	Notes
1	22	Tachometer VDO Euro/Sprint	1	5800501	
2	22	Velocity Sensor Complete	1	5800508	
3	22	Battery	1	5800504	
4	22	Circlip E8	1	5800503	
5	22	Bushing	2	5800502	
6	22	Sensor Support	1	5800052	
7	22	Velocity Sensor Shaft	1	5800054	
8	22	Magnet Support	1	5800053	
9	22	Magnet	3	5800505	
10	22	Nut/Nylock M5	1	5800211	
11	22	Bolt TCEI M5x12	2		
12	22	Single Magnet Support	1	8900034	
13	22	Magnet VDO	1		
14	22	Bracket	1	8900105	
1	22	Tachometer Complete (Euro)	1	TACHVDOEURO	
2					
3					
1	22	Tachometer Complete (Sprint)	1	TACHVDOSPRINT	
3					
12					
13					
14					