

SERIES 570 GX (version 2000 - from 570165)



POS.	Page	Description	N.Pieces	Item Number	Notes
1	2/1	Frame / Lifting	1	5701015	
2	2/1	Bar / Shut Off & Self-Loading	1	5701017	
3	2/1	Spring	1	5700013	
4	2/1	Cable / Shut Off (1999)	1	5500025	rif.570 (1999)
5	2/1	Cylinder / Hydraulic	1	5800066	
6	2/1	Roller PVC	1	5700023	
7	2/1	Finger / Cursor	1	5800050	
8	2/1	Circlip I 35	1	5800144	
9	2/1	Zirk / Grease M6	2	5800112	
10	2/1	Forks / Hoseguide	1	5702020	
11	2/1	Cursor	1	5801006	
12	2/1	Bar / Hoseguide	1	5700005	
13	2/1	Bar / Overwind	1	5701016	
14	2/1	Spring	1	5700013	
15	2/1	Rod / By-pass Compensation	1	5702014	
16	2/1	Bearing / Support UCP 207	1	5500111	
17	2/1	Sprocket 1/2" S (specify quantity of teeth)	2	5500037	z...
18	2/1	Bearing / Hoseguide Bar Support UCPA 206	2	6000104	
19	2/1	Pin / Security	2	5800042	
20	2/1	Chain 1/2"	1	5800119	2.78 meters
21	2/1	Link / Master 1/2"	1	5800120	
22	2/1	Cover / Primary Chain ABS	1	5700033	
23	2/1	Leg / Stabilizer Left	1	5700030	
		Leg / Stabilizer Right	1	5700031	
24	2/1	Pin / Roller PVC	1	5800031	
25	2/1	Tool / PTO	1	5800041	
26	2/1	Pawl / Anti-Rollback	1	5700029	
27	2/1	Pin / Turntable	1	5800043	
28	2/1	Bearing / Turntable	1	5700107	
29	2/1	Chassis	1	5701007	
30	2/1	Axle / Half 5 lug	2	5800117	
31	2/1	Wheel 5 lug (specify wheel size)	2	5800116	pn
32	2/1	Coupler Bauer Ø 76 M	2	5701109	
33	2/1	Clamp Ø 75 (73-79)	4	5500113	
		Clamp Ø 82 (79-86)	4	5700103	
		Clamp Ø 90 (86-95)	4	5800137	
34	2/1	Hose / PET (specify hose I.D.)	1	TUBPOL...	Ø PE
35	2/1	Nipple / LOZ (specify hose I.D.)	1	5500033	Ø PE
36	2/1	Clamp / Cable Ø 4	1	5500131	
37	2/1	Reel Complete (with pos 38)	1	5701002	c.38
38	2/1	Gear / Drive (unfinished)	10	5700001	gr
39	2/1	Cover / Drive Gear (kit)	1	5701024	
40	2/1	Eye / Chassis Front with Towing	1	5701008	
41	2/1	Jack / Chassis	1	5701009	
42	2/1	Tachometer / Electronic VDO complete	1	TACHVDOEURO	v.pag.22-f.570165.
43	2/1	Cap / Magnet 22x4 (from serial #570166)	1	5800150	d.570166
44	2/1	Tachometer / Electronic VDO complete	1	TACHVDOSPRINT	v.pag.22-f.570166.

SERIES 570 GX (version 2000 - from 570165)

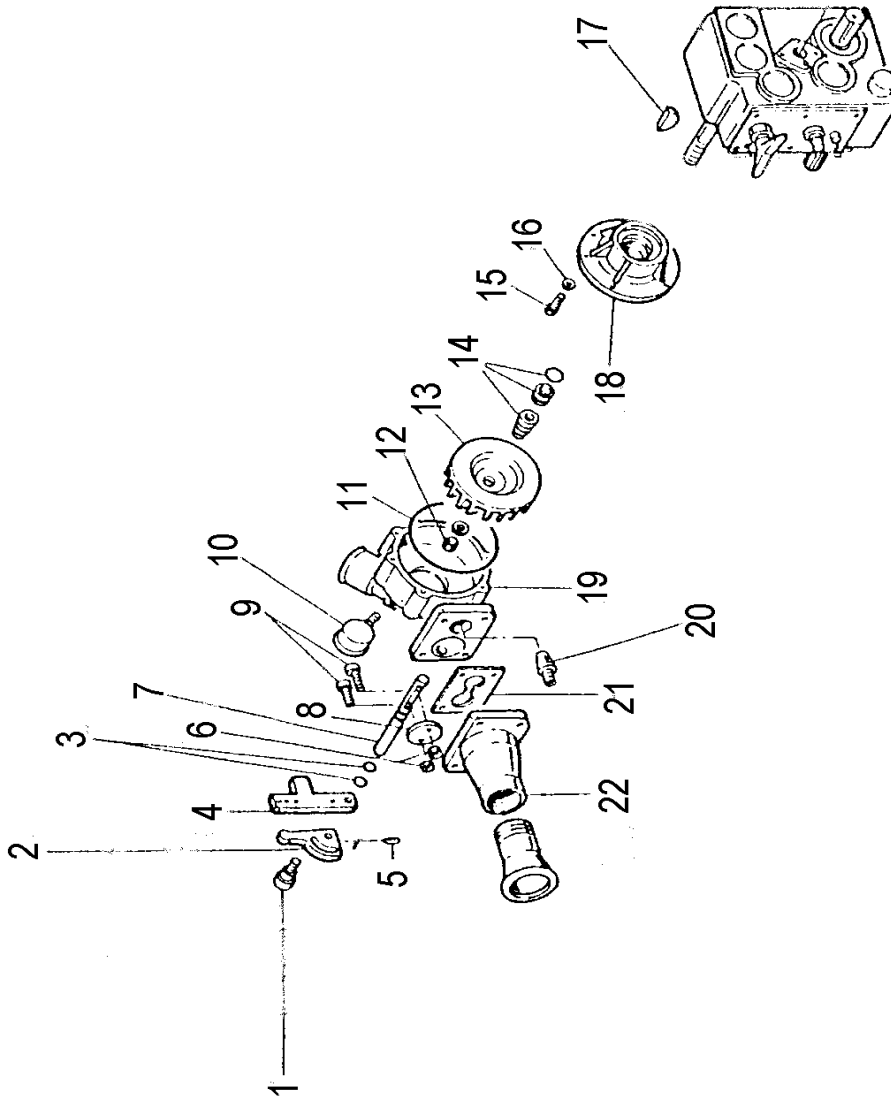


POS.	Page	Description	N.Pieces	Item Number	Notes
45	2/1	Bushing / SS	1	5600028	
46	2/1	Guide / By-pass Compensation	1	5800058	
47	2/1	Connector 8x22x7 (until serial #570165)	1	5800140	f.570165
48	2/1	Sprocket Z7 complete with chain 1"1/2	1	5700006	
49	2/1	Cover / Reelside	2	5701023	
50	2/1	Gearbox Comer D 743 A	1	5600101	v.pag.15/2
51	2/1	Plug M 3/8"	1	5500103	
52	2/1	Base / Terret	1	5701003	
53	2/1	Brake / Comer Gearbox (2.744.7006.00)	1	5800143	i2.744.7006.00
54	2/1	Lever / Gearbox Command	1	5600039	
55	2/1	Handle / Command 25x10	1	5800109	
56	2/1	Coupler Bauer Ø 76 F (unfinished)	1	5701106	gr
57	2/1	Elbow / Supply with Flange	1	5700034+5500010	
58	2/1	Ring / Sealing UM 70.90.10	1	5500106	
59	2/1	Circlip E 70	1	5500110	
60	2/1	Bearing	1	5500108	
61	2/1	Support / Bearing	1	5500011	
62	2/1	Clamp 86-95	4	5800137	
63	2/1	Hose / Rubber 80x93	1	5500102	0.54 meters
64	2/1	Pump / Manual Hydraulic GLSE 16	1	5800126	v.pag.10045
65	2/1	Circlip E 35	1	5500130	
66	2/1	Gauge / Pressure	1	5800115	
67	2/1	Lever / By-pass	1	5600035	
68	2/1	Handle / Treaded Ø 25 M6	1	2000105	
69	2/1	Lever / Command By-pass	1	4010021	
70	2/1	Cone / Inlet	1	5600026	
71	2/1	Cap FNPT 2" zinc	1	5800121	
72	2/1	Oring Bauer Ø 76	2	5701111	
73	2/1	Hose / Rubber 80x93	1	5500102	4 meters
74	2/1	Cover / Inner Primary Chain ABS	2	5500048	
75	2/1	Clamp 86-95	4	5800137	
76	2/1	Coupler 2"1/2	1	5600027	
77	2/1	Cover / Drive	1	5600033	
78	2/1	Screw / Set M5x8	1	4010113	
79	2/1	Oring OR 108	2	5800213	
80	2/1	Shaft / By-pass valve	1	5600019	
81	2/1	Nut M5 SS	1	5800211	
82	2/1	Flapper / By-pass	1	5600020	
83	2/1	Bolt TE M5x20 SS	2	5800210	
84	2/1	Gasket / Rubber	1	5600010	
85	2/1	Nozzle / Turbine (specify diameter)	1	5500202	Ø ...
86	2/1	Nut / Lock M16 SS	1	5800209	
87	2/1	Impeller / Turbine	1	5600018	
88	2/1	Seal / Mechanical BT PR/FN 20	1	8900201	
89	2/1	Cover / Turbine	1	5600017	
90	2/1	Bolt TCEI M8x25 SS	4	8900203	
91	2/1	Washer / Copper 8x14	4	8900202	

SERIES 570 GX (version 2000 - from 570165)



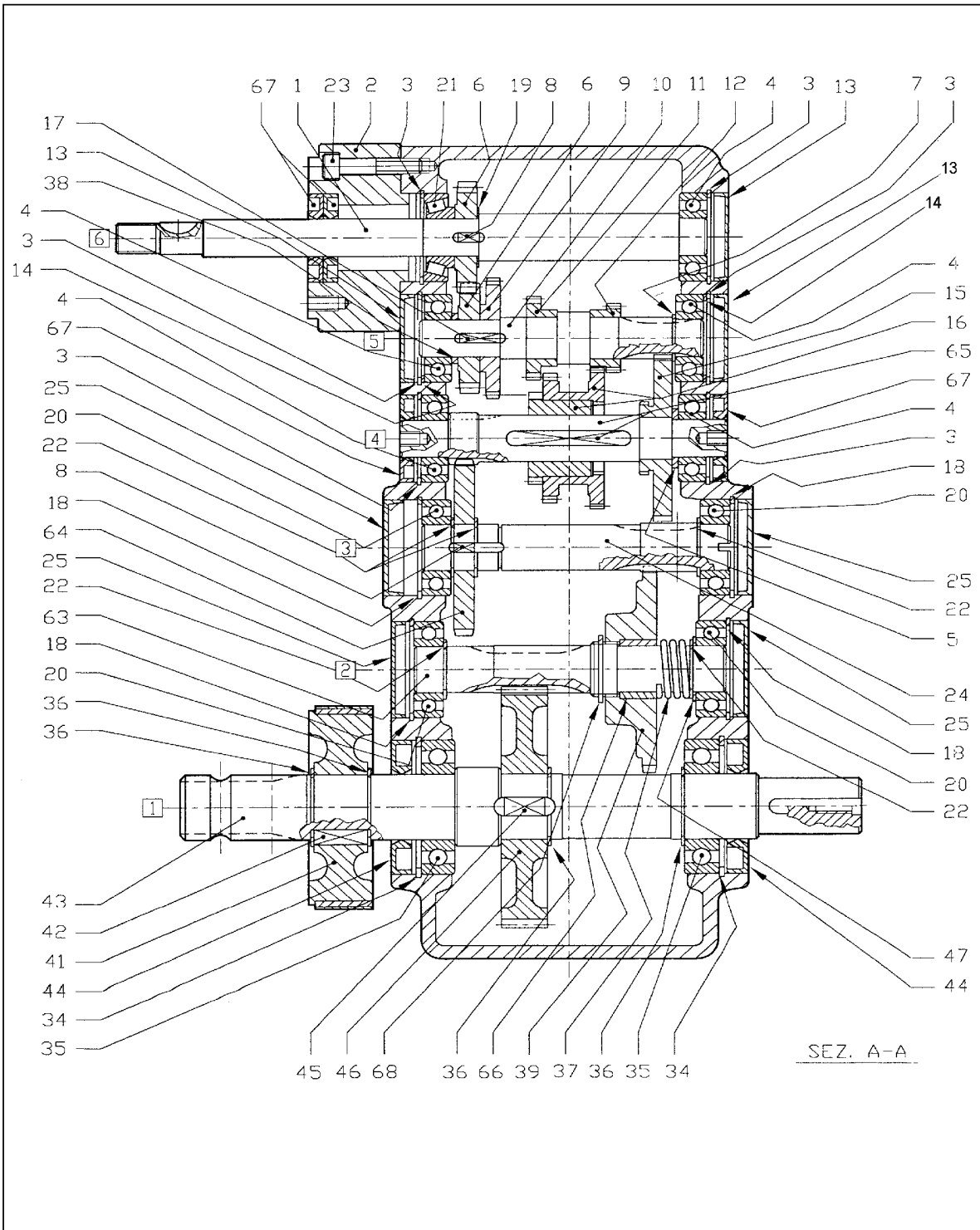
POS.	Page	Description	N.Pieces	Item Number	Notes	
92	2/1	Key / Woodruff 6x9	1	5600201		
93	2/1	Oring OR 3700	1	5600205		
94	2/1	Body / Turbine	1	5600016		
95	2/1	Nut / Lug	10			
96	2/1	Filter SS 76/80 (optional)	1	5500050	op	
97	2/1	Hose / Hydraulic 1/4" R7 L=970	1	5700113		
98	2/1	Pin / Cotter Ø 3	2	COOP03AMA		
99	2/1	Coupler 1/4" 90° (optional)	1	5800304	op	
100	2/1	Coupler 1/8" 90° (optional)	1	5800307	op	
101	2/1	Nipple 2"1/2 - 2" (optional)	1	5800316	op	
102	2/1	Bushing 2" M - 2"1/2 F (optional)	1	5800315	op	
103	2/1	Valve 2" (optional)	1	5800302	op	
104	2/1	Tee / Coupling 1/4" M+M+F (optional)	1	5800130	op	
105	2/1	Hose / Hydraulic 1/4" R7 L=1500 (optional)	1	5700112	op	
106	2/1	Nipple 1/4"-1/4" (optional)	1	5800129	op	
107	2/1	Cylinder / Hydraulic (optional)	1	5800066	op	
108	2/1	O-Ring / Spacer	1	5600106		
109	2/1	Bracket / Hyd Hose Security	1	7000047		
79		----- \ Turbine T4 complete / /				
80						
81						
82						
83						
84						
85						
86						
87	2/1			1	TUR560	
88						
89						
90						
91						
92						
93						
94						

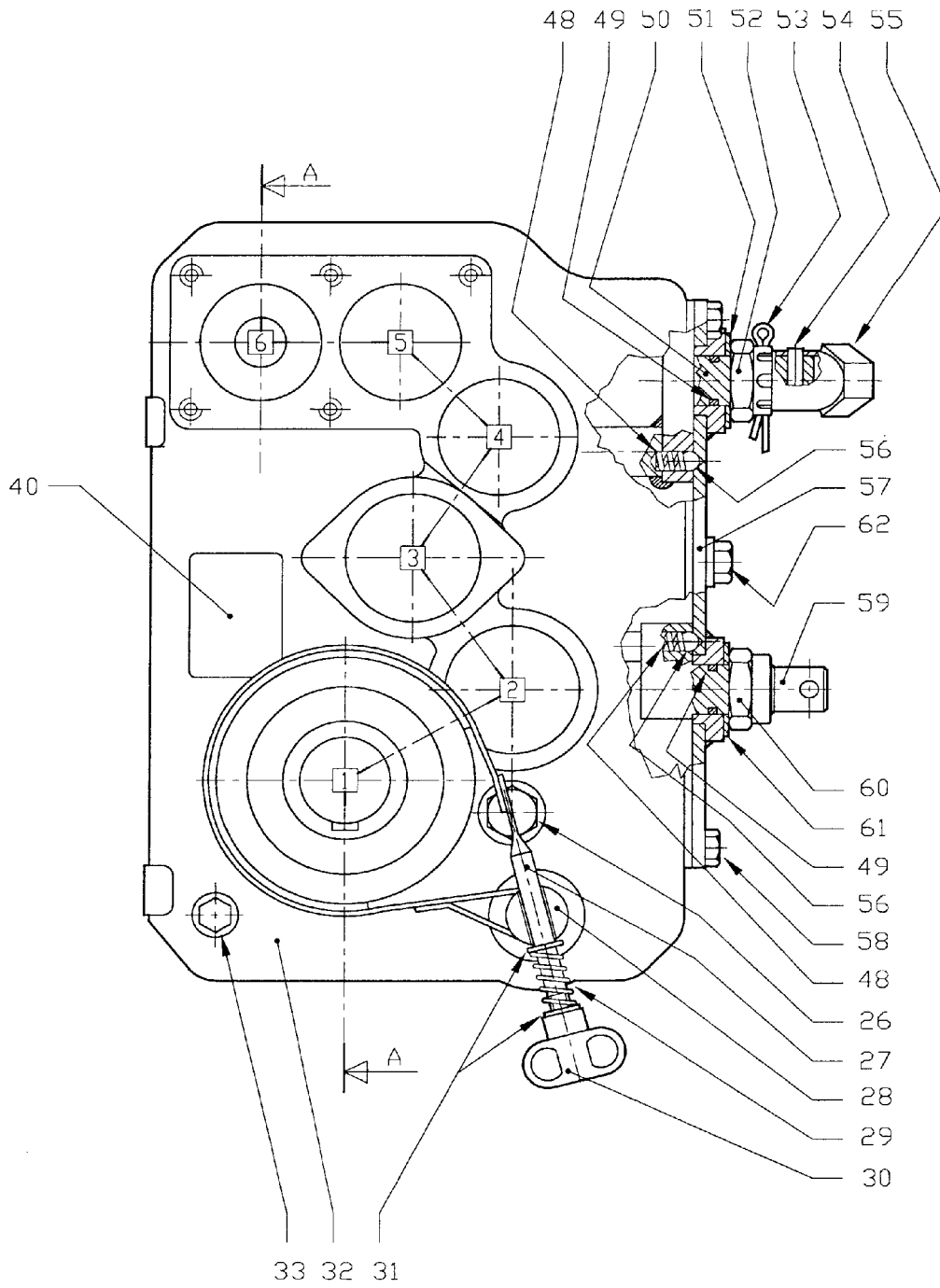


TURBINE T4



POS.	Page	Description	N.Pieces	Item Number	Notes
1	T4	Threaded Knob M6	1	2000105	
2	T4	By-Pass Lever	1	4010021	
3	T4	O-Ring 108	2	5800213	
4	T4	Command Lever	1	5600035	
5	T4	Set Screw M5x8	1	4010113	
6	T4	Nut S.S. M5	2	5800211	
7	T4	By-Pass Valve Shaft	1	5600019	
8	T4	Flapper	1	5600020	
9	T4	Bolt TE M5x20 S.S.	2	5800210	
10	T4	Pressure Gauge	1	5800115	
11	T4	O-Ring 3700	1	5600205	
12	T4	Nut/Nylock M16 S.S.	1	5800209	
13	T4	Impeller	1	5600018	
14	T4	Mechanical Seal BT PR/FN 20	1	8900201	
15	T4	Bolt TCEI M8x25 S.S.	4	8900203	
16	T4	Copper Washer 8x14	4	8900202	
17	T4	Woodruff Key 6x9	1	5600201	
18	T4	Turbine Cover	1	5600017	
19	T4	Turbine Body	1	5600016	
20	T4	Turbine Nozzle	1	5500202	Ø ...
21	T4	Gasket	1	5600010	
22	T4	Inlet Cone	1	5600026	





GEARBOX D-743A (9.743.023.00)

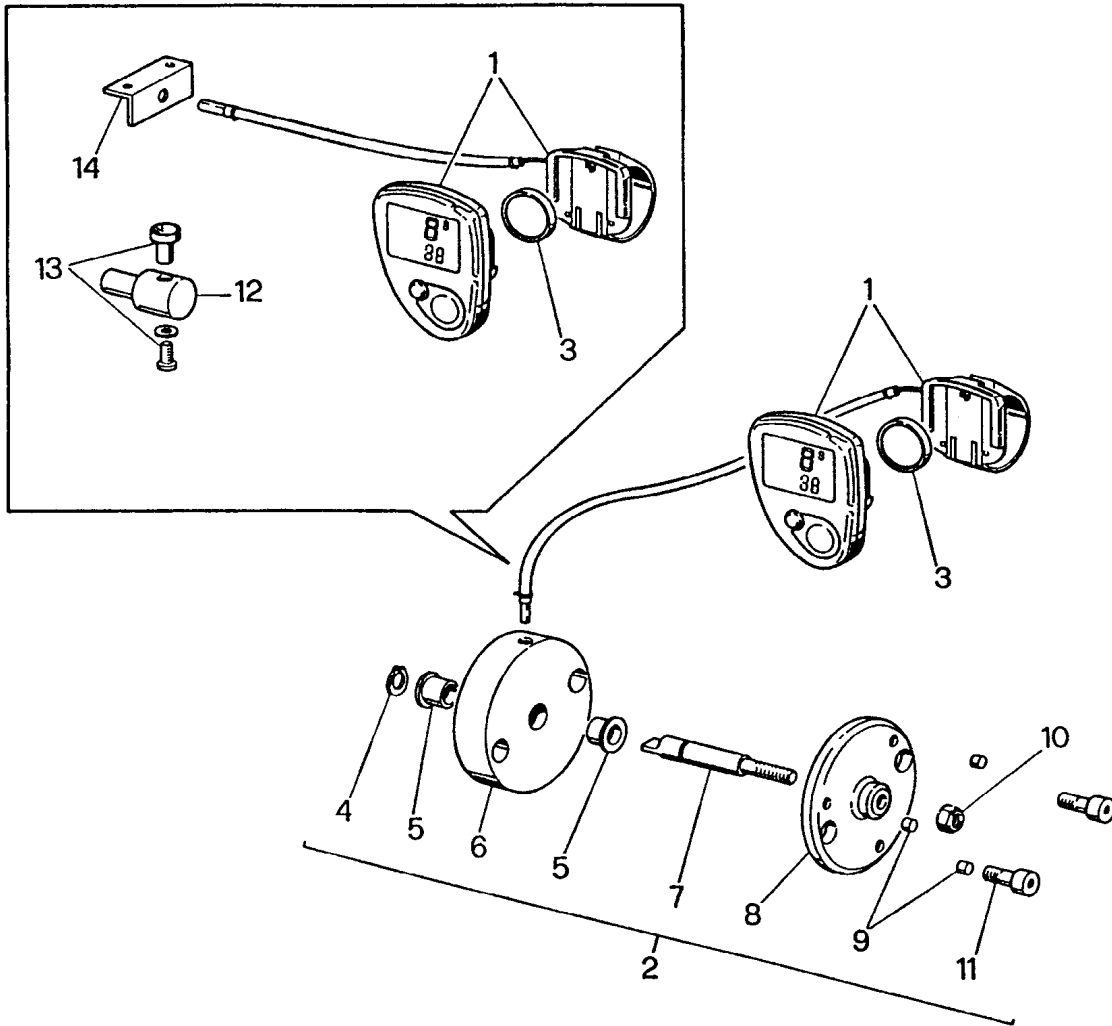


POS.	Page	Description	N.Pieces	Item Number	Notes
1	15/2	Impeller Shaft	1	0.744.2015.00	
2	15/2	Flange	1	0.744.7008.00	
3	15/2	Circlip I47	6	8.5.2.01290	
4	15/2	Bearing 6204	5	8.0.1.00405	
5	15/2	Spacer 32x20.3x2.5	1	0.104.7525.00	
6	15/2	Gear Z=21, M2.5	2	0.744.6018.00	
7	15/2	Circlip E20	1	8.5.1.00261	
8	15/2	Key 5x5x10	2	8.4.1.01511	
9	15/2	Gear Z=35, M1.75	1	0.744.6007.00	
10	15/2	Pinion Shaft Z=12, M1.5	1	0.744.5011.00	
11	15/2	Gear Z=24, M1.75	1	0.744.5015.00	
12	15/2	Gear Z=22, M1.5	1	0.735.5001.00	
13	15/2	Oil Plug 47x7	3	8.7.0.01362	
14	15/2	Spacer 40.3x46.7	2	0.457.7500.00	
15	15/2	Crown Gear Z=58, M1.5	1	0.744.6003.00	
16	15/2	Compound Gear	1	2.744.5007.00	
17	15/2	Key 5x5x20	1	8.4.1.01617	
18	15/2	Circlip I52	4	8.5.2.00038	
19	15/2	Spacer 20.3x32	1	0.104.7500.00	
20	15/2	Bearing 6205	4	8.0.1.00034	
21	15/2	Bearing 30204	1	8.0.9.01591	
22	15/2	Circlip E25	5	8.5.1.00004	
23	15/2	Bolt TCEI M8x40 (8.8)	4	8.1.2.01723	
24	15/2	Pinion Shaft Z=12, M1.75	1	0.743.5012.00	
25	15/2	Oil Plug 52x7	4	8.7.0.00693	
26	15/2	Oil Level Sight Glass	1	8.6.4.00673	
27	15/2	Brake Band	1	2.744.7006.00	
28	15/2	Hinge	1	0.744.7005.00	
29	15/2	Brake Spring	1	0.735.7103.00	
30	15/2	Threaded Knob M8 F	1	8.9.1.01713	
31	15/2	Washer 8.4x14	2	8.3.2.00439	
32	15/2	Casing	1	0.743.0301.00	
33	15/2	Plug 3/8" GAS	1	8.6.5.00006	
34	15/2	Circlip I72	2	8.5.2.00131	
35	15/2	Bearing 6207	2	8.0.1.00870	
36	15/2	Circlip E35	4	8.5.1.00005	
37	15/2	Spring	1	0.743.7102.00	
38	15/2	Spacer 20.9x26.9x4	1	0.744.7104.00	
39	15/2	Crwon Gear Z=62, M1.75	1	0.743.6006.00	
40	15/2	Serial Plate	1	0.124.7101.00	
41	15/2	Brake Drum	1	0.744.7004.00	
42	15/2	Key 10x8x25	1	8.4.1.00232	
43	15/2	P.T.O. Shaft	1	0.743.3002.00	
44	15/2	Oil Seal 35x72x10	2	8.7.3.00055	
45	15/2	Key 10x8x20	1	8.4.1.01342	
46	15/2	Gear Z=62, M2	1	0.743.6000.00	
47	15/2	Spacer 25.2x33.8x1	2	0.743.7510.00	

GEARBOX D-743A (9.743.023.00)



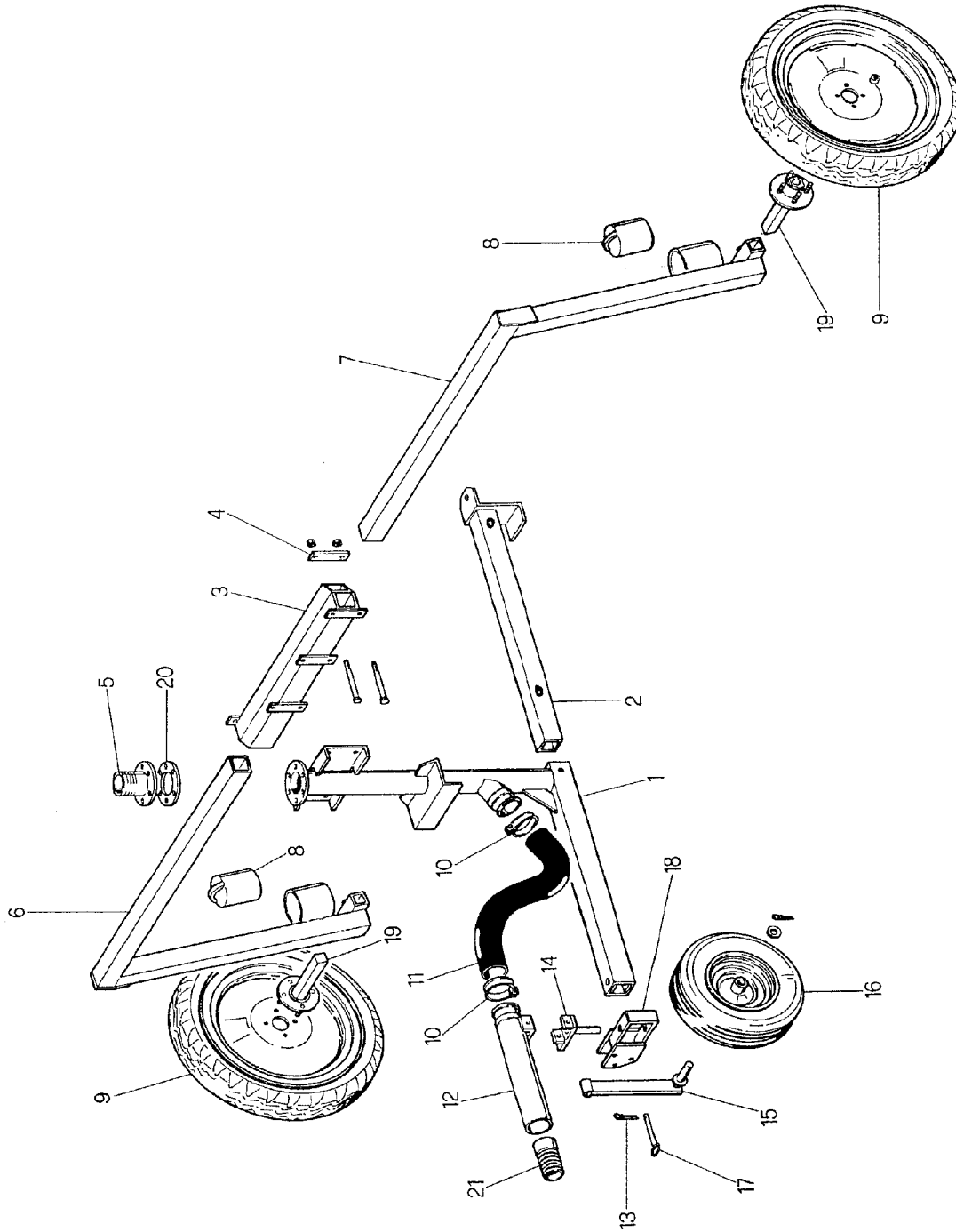
POS.	Page	Description	N.Pieces	Item Number	Notes
48	15/2	Spring	2	0.721.7101.00	
49	15/2	O-Ring 3062	2	8.7.6.00191	
50	15/2	4 Speed Lever	1	2.744.7002.00	
51	15/2	Spring Washer 40x20.4x1.5	1	8.5.5.01316	
52	15/2	Castle Nut M20x1.5	1	8.2.2.00997	
53	15/2	Cotter Pin 4x35	1	8.4.7.00760	
54	15/2	Rollpin 5x24	1	8.4.5.00934	
55	15/2	Handle Grip	1	1.721.7002.00	
56	15/2	Ball 5/16" (7.9 mm)	2	8.5.9.00166	
57	15/2	Cover	1	2.743.1312.00	
58	15/2	Bolt M8x18 (8.8)	6	8.1.1.01676	
59	15/2	Lever	1	2.743.7004.00	
60	15/2	Locking Nut M20x1.5	1	0.744.7150.00	
61	15/2	Spacer 32x20.3x1	1	0.104.7510.00	
62	15/2	Plug 1/2" GAS	1	8.6.5.00203	
63	15/2	Pinion Shaft Z=10, M2	1	0.743.5019.00	
64	15/2	Crown Gear Z=53, M1.75	1	0.743.6004.00	
65	15/2	Pinion Shaft with Key	1	2.743.5022.00	
66	15/2	Bushing	1	0.743.7107.00	
67	15/2	Oil Seal 20x47x7	4	8.7.3.01395	
68	15/2	Circlip E29x2	1	8.5.1.02281	



TACHOMETER VDO EURO/SPRINT



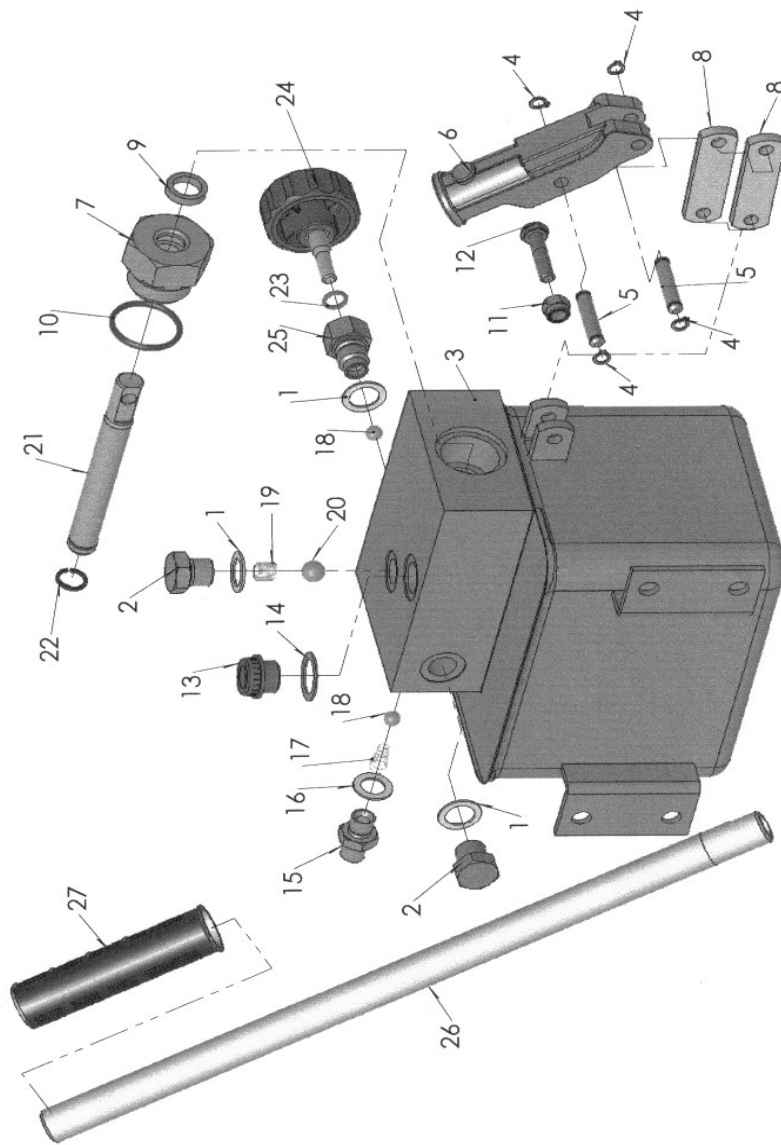
POS.	Page	Description	N.Pieces	Item Number	Notes
1	22	Tachometer VDO Euro/Sprint	1	5800501	
2	22	Velocity Sensor Complete	1	5800508	
3	22	Battery	1	5800504	
4	22	Circlip E8	1	5800503	
5	22	Bushing	2	5800502	
6	22	Sensor Support	1	5800052	
7	22	Velocity Sensor Shaft	1	5800054	
8	22	Magnet Support	1	5800053	
9	22	Magnet	3	5800505	
10	22	Nut/Nylock M5	1	5800211	
11	22	Bolt TCEI M5x12	2		
12	22	Single Magnet Support	1	8900034	
13	22	Magnet VDO	1		
14	22	Bracket	1	8900105	
1		\\			
2	22	Tachometer Complete (Euro)	1	TACHVDOEURO	
3		/			
		/			
1		\\			
3		\\			
12	22	Tachometer Complete (Sprint)	1	TACHVDOSPRINT	
13		/			
14		/			



SERIES 570 GX TROLLEY



POS.	Page	Description	N.Pieces	Item Number	Notes	
1	26	Trolley Body	1	57020118		
2	26	Draw Bar	1	57020112		
3	26	Head	1	57020113		
4	26	Leg Bracket	2	57020111		
5	26	Coupler for Sinkro	1	5700039	Ø PE 75-82	
		Coupler for Ranger	1	5800044	Ø PE 90	
6	26	Left Leg	1	57020119		
7	26	Right Leg	1	570201110		
8	26	Weight 570	2	BILLETTE	.28 meters	
9	26	Wheel 125 D 70 15 4 lug	2	5800104	pn	
10	26	Clamp 86-95	2	5800137		
11	26	Rubber Hose 10 80x93	1	5500102	.8 meters	
12	26	Attachment PE - trolley	1	57020114		
13	26	R-Clip Ø 3 AMA	1	COOP03AMA		
14	26	Pin	1	57020116		
15	26	Wheel bracket	1	57020117		
16	26	Wheel 15.600x6" 4 ply or 4.00x6"	1	5500128		
17	26	Locking Pin	1	5800042		
18	26	Wheel Pivot Bracket	1	57020115		
19	26	Spindle 4 lug 35x35x200	2	5800103		
20	26	Gasket	1	58000461		
21	26	Barbed Nipple	1	5500033	Ø PE	
1						
2						
3						
4						
6	26		Trolley Bare 570	1	5702011	
7						
12						
14						
15						
18						
1÷21	26	Trolley complete	1	CARR5701		



HYDRAULIC HAND PUMP GLSE16



POS.	Page	Description	N.Pieces	Item Number	Notes
1	10045	Copper Washer 3/8"	3	Rond RM Øi 3-8"	
2	10045	Plug 3/8" GAS zinc	2	10001-10	
3	10045	Pump Body	1	10045-7	
4	10045	Circlip E8	4	S.a. Ø8	
5	10045	Pin zinc	2	10001-15	
6	10045	Pivot Arm	1	10007-24	
7	10045	Plunger Plug	1	10071-16	
8	10045	Bracket	2	10017-9	
9	10045	Gasket	1	csc 2216	
10	10045	O-Ring 4150	1	OR 4150	
11	10045	Locking Nut M8	1	DadoA-M8	
12	10045	Bolt TE M8x35	1	VITE TE M8x35	
13	10045	Oil Plug 1/2" GAS	1	TCN12-ia	
14	10045	Fiber Washer 1/2"	1	Rondella feltro	
15	10045	Nipple 1/4"-1/4"	1	Niples 1-4" 1-4"	
16	10045	Copper Washer 1/4" GAS	1	Rond RM Øi 1-4"	
17	10045	Conical Spring	1	10052-3	
18	10045	Chrome Ball 9mm	2	Sfera Ø9	
19	10045	Spring	1	10003-4	
20	10045	Chrome Ball 1/2"	1	Sfera Ø1-2"	
21	10045	Chrome Plated Piston	1	10045-13	
22	10045	Metal Ring	1	An.Arresto Ø16	
23	10045	O-Ring 112	1	OR 112	
24	10045	Knob	1	10004-1	
25	10045	Knob Coupler	1	10006-15	
26	10045	Command Lever	1	Leva 430	
27	10045	Rubber Grip Ø25	1	AV1014D210	
9		\\			
10		\\			
22		Rebuild Kit	1	GLSE16KIT	
23		/			
		/			