

SERIES 581 GX



POS.	Page	Description	N.Pieces	Item Number	Notes
1	4	Base / Terret 581 GX	1	5810001	
2	4	Bolt TE M20x120 + Lock Nut M20	2	6000110	
3	4	Cylinder / Stabilizer Hydraulic	2	5810016	
4	4	Bracket / Hydraulic Cylinder	2	5810010	
5	4	Bar / Shut-off	1	5810009	
6	4	Fitting / Tee 1/4" M	1	6000111	
7	4	Axle / Roller (lower)	1	5900007	
8	4	Roller PVC (lower)	1	5700023	
9	4	Fork / Hoseguide 581 GX	1	5810011	
10	4	Frame / Cart Lifting 581 GX	1	5810006	
13	4	Cable / Shut-off	1	5500025	rif.581
14	4	Master Link 1/2"	1	5800120	
15	4	Chain 1/2" S	1	5800119	2.9 meters
16	4	Sprocket 1/2" S	2	5500037	z...
17	4	Cover / Inner Primary Chain	2	5700028	
18	4	Bearing UCPA 206	2	6000104	
19	4	Cover Primary Chain	1	7000037	
20	4	Bar / overwind 581 GX	1	5810017	
21	4	Circlip I35	1	5810144	
22	4	Finger / cursor Ø 35	1	5800050	
23	4	Cursor	1	5801066	
24	4	Zirk / Grease M6	2	5800112	
25	4	Spring	1	5700013	
26	4	Bar / Levelguide	1	5900005	
27	4	Key 8x7x35	2		
28	4	Cable / Primary Shut-off	1	5500041	rif.581
29	4	Stop / By-pass Rod	1	5800058	
30	4	Rod / By-pass Rod	1	5810027	
31	4	Coupler / Loz (specify hose I.D.)	1	5500033	Ø PE
32	4	Clamp PE Ø 82 (79-86)	4	5700103	
		Clamp PE Ø 90 (86-95)	4	5800137	
		Clamp PE Ø 100 (95-105)	4	5900102	
		Clamp PE Ø 110 (104-115)	4	5800114	
33	4	Hose / PET (specify hose I.D. and length)	1	TUBPOL...	Ø PE-ml
34	4	Reel / Complete	1	5810004	
35	4	Gear / Drive	11	5810001	gr
36	4	Bearing UCP 208	1	5800111	
37	4	Cover / Drive Gear (kit)	1	5810023	
38	4	Support / Bearing 6217	1	5800003	
39	4	Bearing 6217	1	5800108	
40	4	Circlip E85	1	5800110	
41	4	Ring / Sealing UM 85-105-10	1	5800106	
42	4	Elbow / Supply with Flange	1	6000014+5800002	
43	4	Support / Tachometer	1	5810025	
44	4	Clamp 86-95	4	5800137	
45	4	Hose / Rubber 80x93	1	5500102	.75 meters
46	4	Cover / Drive	1	5810024	

SERIES 581 GX

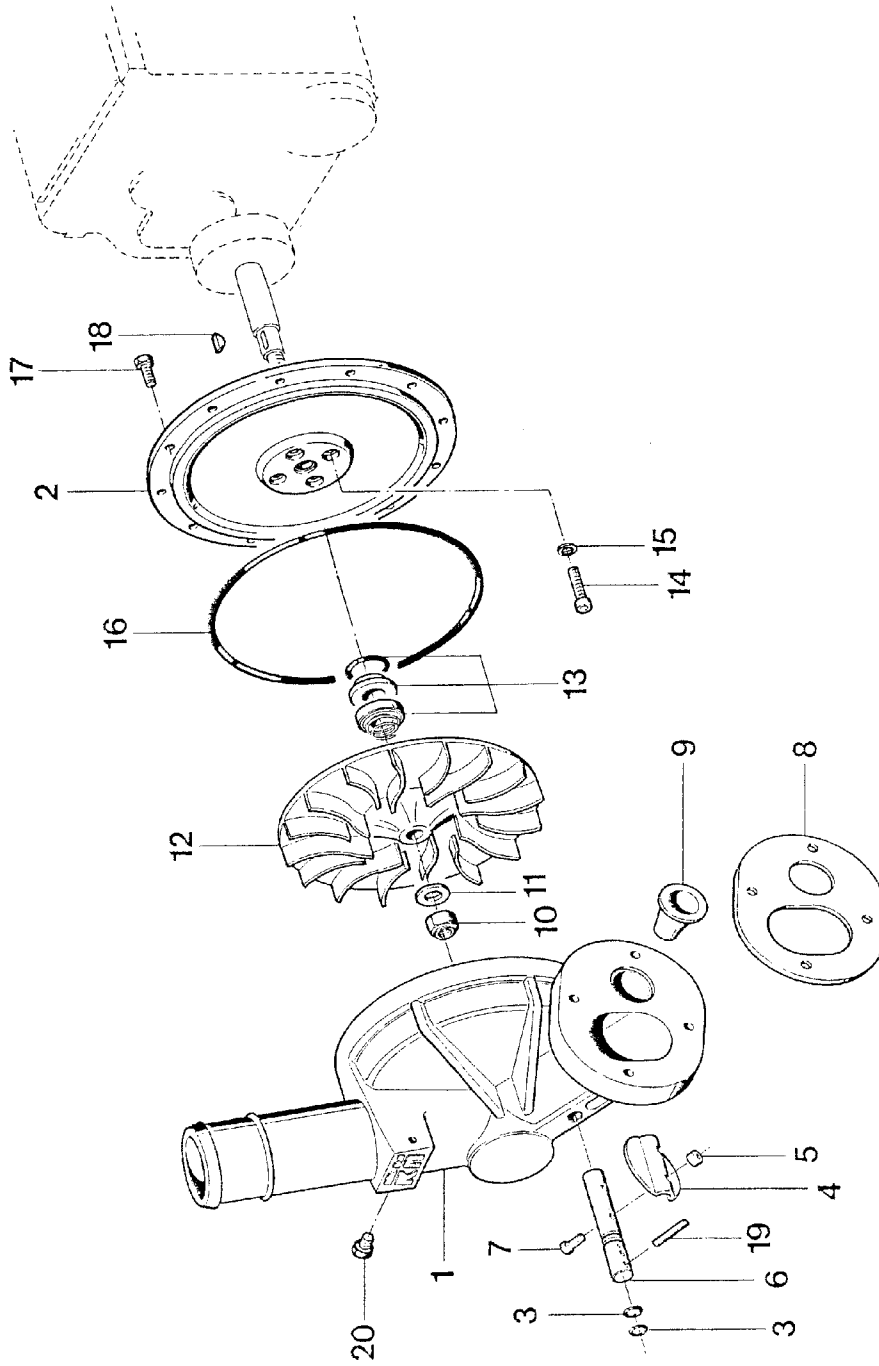


POS.	Page	Description	N.Pieces	Item Number	Notes
47	4	Handle 25x110	1	5800109	
48	4	Lever / By-pass Turbine	1	6000026	
49	4	Knob 6 lobe	1	5800102	
50	4	Stop / By-pass Rod	1	5800030	
51	4	Gauge / Pressure	1	5800115	ABI 044
52	4	Turbine T2M flanged version 2001	1	TUR550M	v.pag.13/1
53	4	Coupler Bauer Ø 108 F	1	6001027	
55	4	Brake Band Comer	1	5800143	i.2.744.7006.0
56	4	Flat Grip Handle 25x10	1	5800109	0
57	4	Gearbox Lever 581 GX	1	5810026	
58	4	Oil Plug	1		
59	4	Gearbox Comer D 745 A versione 9.745.044.00	1	5810101	i.8.6.7.00269
60	4	Sprocket Z8 complete of chain ISO 24 A	1	5801010	v.pag.16/1
62	4	Closed Cap 22x4	1		
63	4	Tachometer VDO electronic complete vers.2001	1	TACHVDOSPRINT	i.8.7.0.01343
64	4	Drive Sprocket Cover	1	6000059	v.pag.22
65	4	Reel Side Cover in ABS	2	5810005	
66	4	PTO Handle	1	5800041	
67	4	Chassis Jack Hydraulic	1	6000030	
68	4	Chassis Jack Mechanical	1	5810014	op-rif.581
71	4	Chassis 581 GX	1	5810002	
	4	Chassis 581 GX	1	5811002	f.581010
72	4	Travel Pin	1	5800062	d.581011
73	4	Mechanical Rotation Gear	1	7000402	
73+74	4	Mechanical Rotation Gear with Turntable Bearing	1	6001038	op
74	4	Turntable Bearing	1	5900101	op
75	4	Sprocket Z13 M7, Ø 25 bore	1	7000403	
76	4	Gearbox R17	1	5800401	op
77	4	Gearbox Plate R17	1	5800405	op
78	4	Gearbox Crank Handle	1	6000037	op
79	4	Half Axle 50x50x400 (5 lug)	2	5800117	op
80	4	Inferior Lifting Frame Support	2	5810008	
81	4	Superior Lifting Frame Support	2	5810007	
82	4	Wheel 10.0/80/12.7 with rim, 5 lug	2	5900103	
	4	Wheel 26x12.00-12 8 PR with rim, 5 lug	2	5810111	pn
83	4	Circlip E40	1	5800155	op
84	4	Ball Bauer Ø 108 F	1	5801136	
85	4	Gasket Bauer Ø 108	2	5801142	gr
86	4	Coupler with hosetail Bauer Ø 108	2	5801138	
87	4	Clamp 110 P	4	5800139	
88	4	Rubber Hose 102x116	1	5800113	
89	4	Anti-Return Pawl version 2001	1	5810012	4.5 meters
90	4	Nipple 1/4"-1/2"	2	7000308	
91	4	Hydraulic Tractor Ends 1/2" F male	2	7000309	
92	4	Nipple 1/4"-3/8"	4	7000307	
93	4	Copper Washer 3/8"	4		

SERIE 581 GX



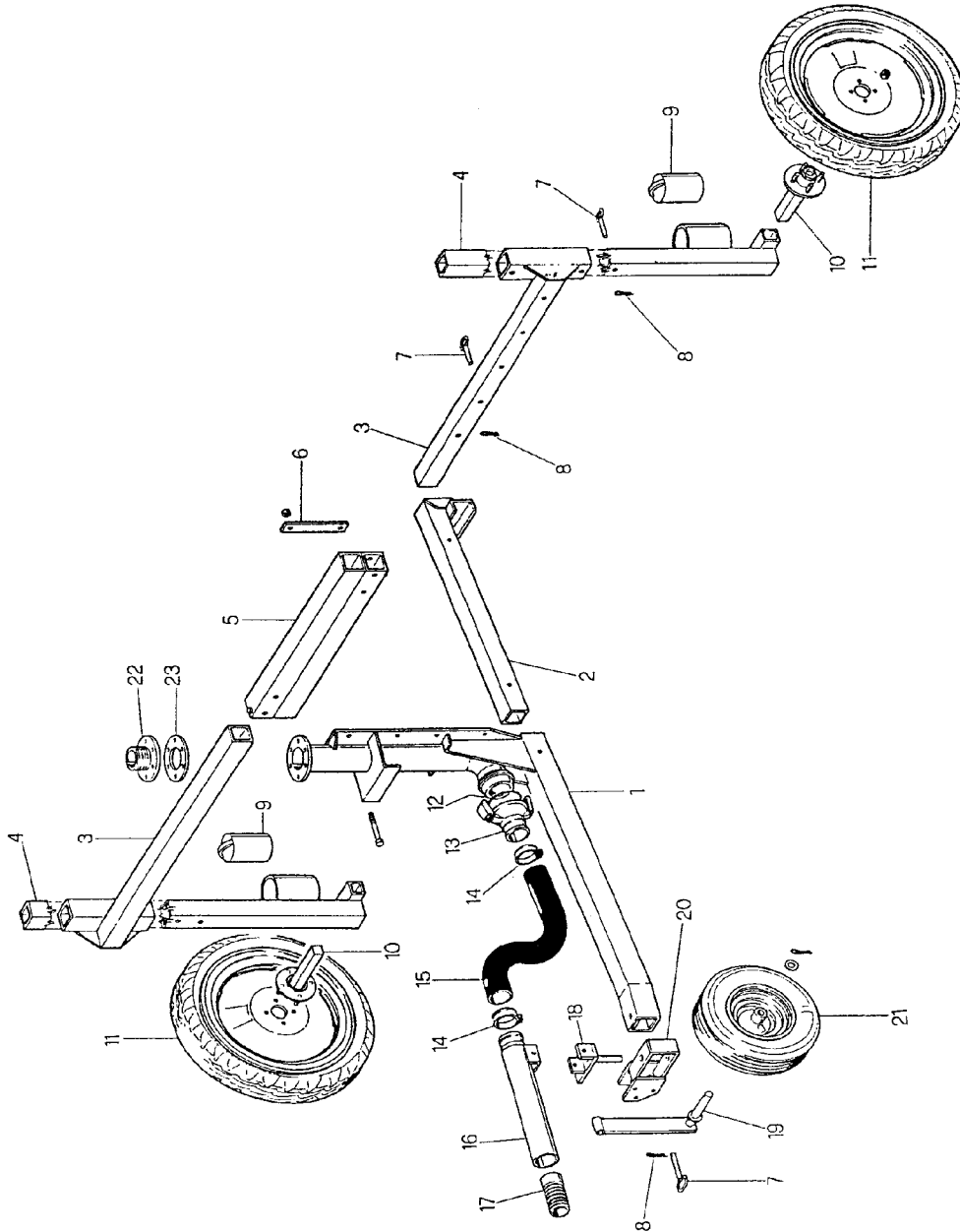
POS.	Page	Description	N.Pieces	Item Number	Notes
94	4	Hydraulic Hose 1/4" R7 L=1350	4	6000109	
95	4	Hydraulic Hose 1/4" R1 L=10.000	2	7000312	
96	4	Lifting Frame Fork for Boom	1	5800068	op
97	4	Chain	2		op
98	4	Lifting Frame for Boom	1	6000044	op
99	4	Mounting Plates	4	5800069	op
100	4	Shut Off Bar for Boom	1	5810022	op
101	4	Hydraulic Cylinder	2	5800066	op
102	4	Stabilizer Mechanical with foot (right)	1	5810015	op
	4	Stabilizer Mechanical with foot (left)	1	5810013	op
103	4	Stabilizer Leg Security Pin	2	5800043	op
104	4	Nipple 1/4"	2	5800129	op
105	4	Coupler-T 1/4" M	1	5800130	op
106	4	Hydraulic Hose 1/4" R7 L=2150	1	5800128	op
107	4	Hydraulic Hose 1/4" R7 L=1200	1	5800127	op
108	4	Nipple 1/4"	1	5800129	op
109	4	Manual Hydraulic Pump GLSE 16 (18)	1	5800126	v.pag.10045
110	4	Manual Hydraulic Pump GLDE 20	1	5810108	
111	4	Sleeve Stainless Steel	1	6000046	
112	4	O-Ring 2300 for Stainless Steel Sleeve	1	6000112	
113	4	Cross Over Pipe Support	1	5810028	op
114	4	Cross Over Pipe Bauer Ø 108 F	1	6000054	op
115	4	U-Bolt	1	8900106	op
116	4	Plug Bauer Ø 108 M	1	8900112	op
117	4	Cap 2" F	1	5800121	
118	4	Hydraulic Cylinder	2	6000055	op
119	4	Hydraulic Distributor (2 lever)	1	7000301	op
120	4	Hydraulic Hose 1/4" L=2150	2	5800128	op
121	4	T Coupler 1/4" M-M-F	2	5800130	op
122	4	Hydraulic Hose 1/4" L=2600	2	7000311	op



TURBINE T2M



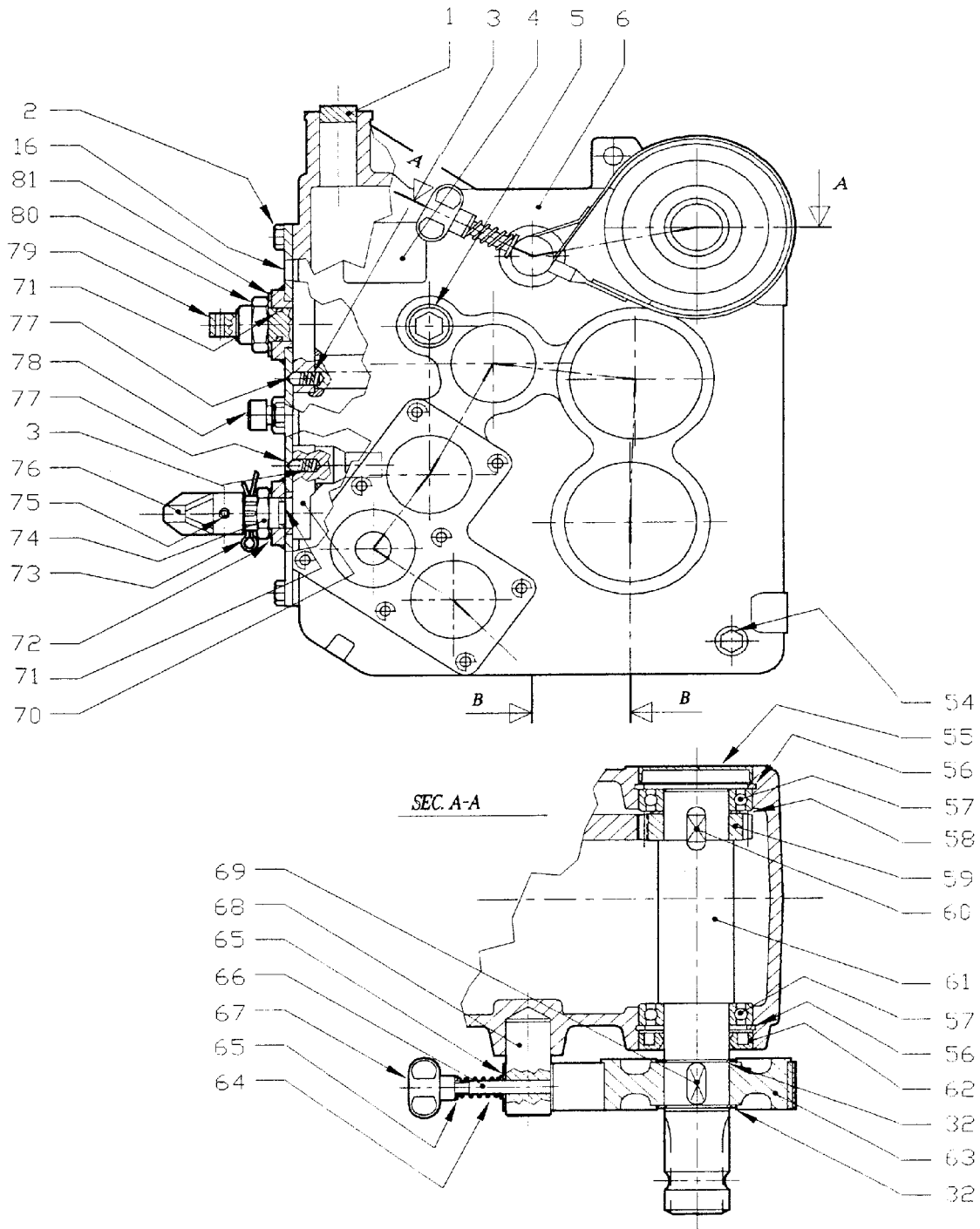
POS.	Page	Description	N.Pieces	Item Number	Notes
1	13/1	Turbine Body 150 degree	1	5501002	
2	13/1	Turbine Flange T2M	1	5810018	
3	13/1	O-Ring 108	2	5800213	
4	13/1	Flapper	1	5500007	
5	13/1	Nut S.S. M5	2	5800211	
6	13/1	By-Pass Valve Shaft	1	5500006	
7	13/1	Bolt TE M5x20 S.S.	2	5800210	
8	13/1	Gasket	1	5500004	
9	13/1	Nozzle Mizar	1	5500202	Ø ...
10	13/1	Nut/Nylock M16 S.S.	1	5800209	
11	13/1	Washer S.S. 17x30x3	1	5800218	
12	13/1	Impeller	1	5500003	
13	13/1	Mechanical Seal Ø20	1	8900201	
14	13/1	Bolt TCEI M8x20 S.S.	4	8900203	
15	13/1	Copper Washer 8x14	4	8900202	
16	13/1	O-Ring 4850	1	5500102	
17	13/1	Bolt TE M8x25	8	8900204	
18	13/1	Woodruff Key 5x9	1	8900205	
19	13/1	Rollpin 5x25	1	5800212	
20	13/1	Plug 1/4" zinc	1	5800208	

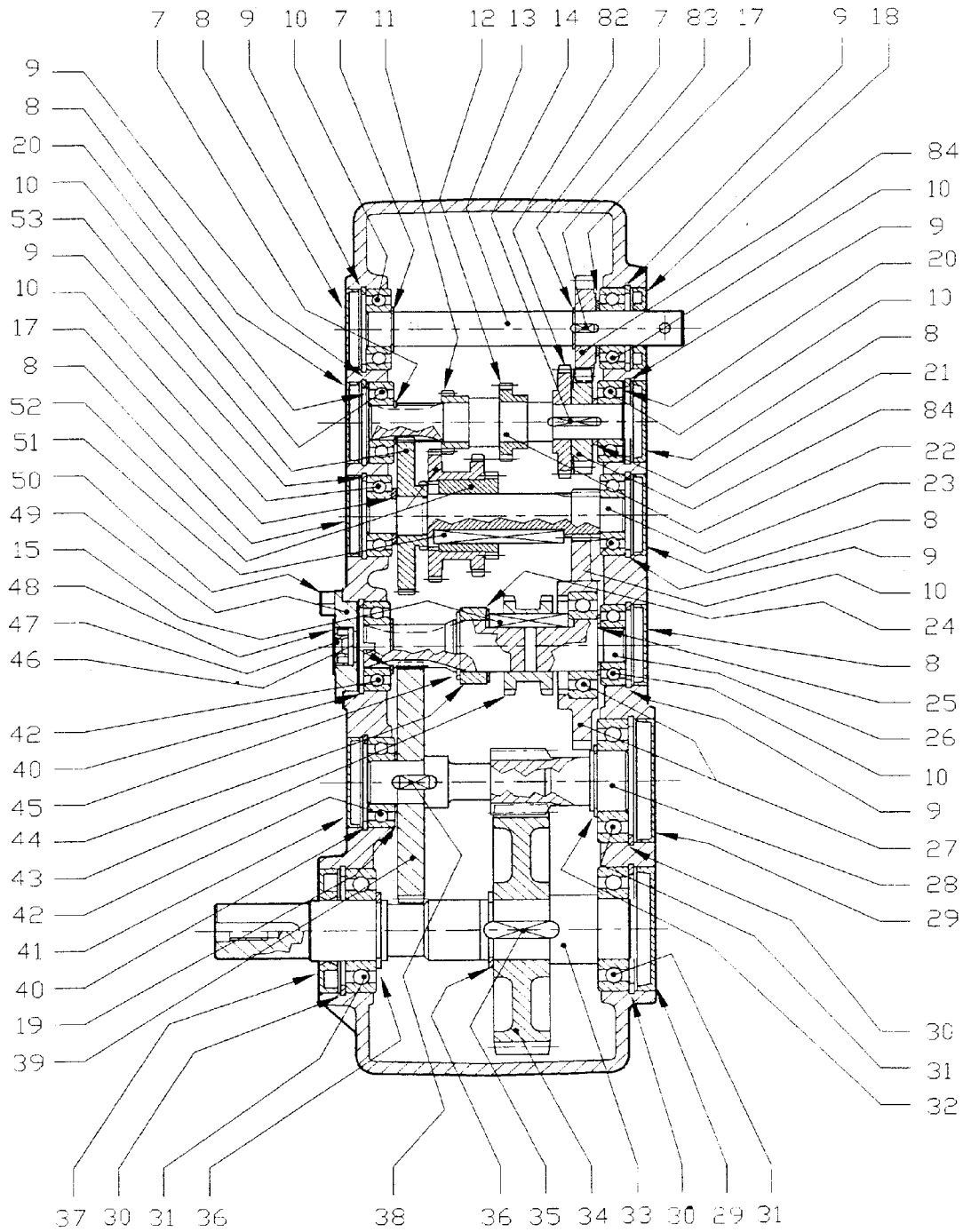


SERIES 580-600 GX TROLLEY (VERSION '98)



POS.	Page	Description	N.Pieces	Item Number	Notes
1	28	Trolley Body	1	58020189	
2	28	Drawbar	1	580201810	
3	28	Leg Support	2	58020185	
4	28	Leg	2	58020186	
5	28	Head	1	58020184	
6	28	Head Mounting Bracket	2	58020181	
7	28	Pin	5	5800042	
8	28	R-Clip Ø 3	5	COOP03AMA	
9	28	Weight	2	BILLETTE	.3 meters
10	28	Hub Assembly 4 lug 35 L=200	2	5800103	
11	28	Wheel 125/70 D15	2	5800104	pn
12	28	Rubber Ring Ø 80 Ferrari	1		c.13
13	28	Coupler Ø 80 with Rubber Ring	1	580201811	c.12
14	28	Clamp 86-95	2	5800137	
15	28	Rubber Hose 10 80 x 93	1	5500102	1.1 meters
16	28	Attachment PE-Trolley	1	58020188	
17	28	Barbed Nipple PE	1	5500033	gr - Ø PE
18	28	Pivot Pin	1	58020187	
19	28	Wheel Support	1	58020183	
20	28	Wheel pivot Bracket	1	58020182	
21	28	Wheel 5.00 x 8"	1	5800149	
22	28	Coupler for Ranger	1	5800044	Ø PE -100-
		Coupler for Sinkro	1	5700039	110
23	28	Gasket	1	58000461	Ø PE 82
1		- - - - - Trolley Bare 580-600GX - - - - -			
2					
3					
4					
5					
6	28			1	5802018
13					
16					
18					
19					
20					
1÷21	28	Trolley Complete	1	CARR5803	





SEC. B-B

GEARBOX D-745A (9.745.044.00)

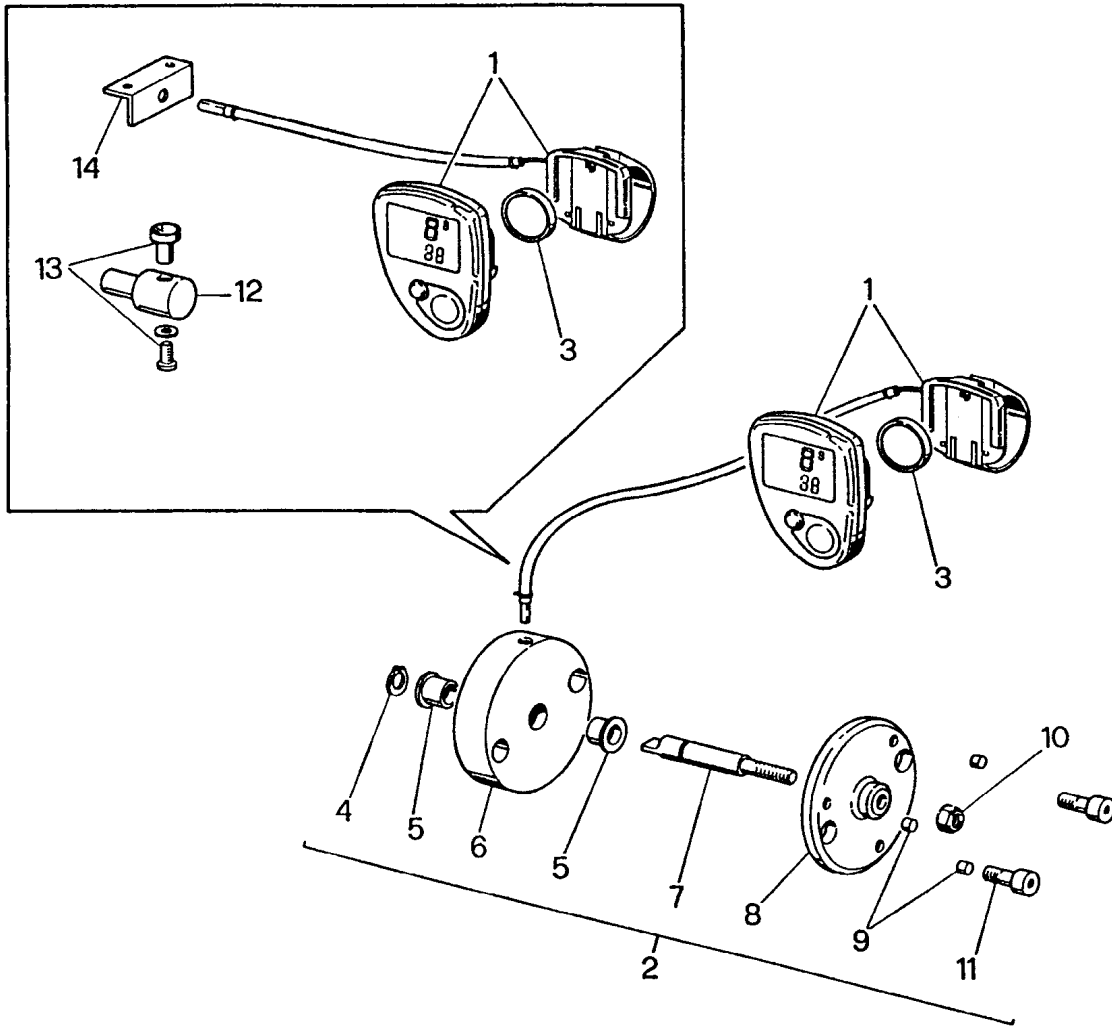


POS.	Page	Description	N.Pieces	Item Number	Notes
1	16/1	Plug	1	01202.069.041	
2	16/1	Bolt TE M8x18 (8.8)	6	8.1.1.01676	
3	16/1	Spring	2	0.721.7101.00	
4	16/1	Serial Plate "COMER"	1	0.124.7101.00	
5	16/1	Oil Sight Glass	1	8.6.4.00273	
6	16/1	Casing	1	0.745.0300.00	
7	16/1	Circlip E20	3	8.5.1.00261	
8	16/1	Oil Plug 47x7	6	8.7.0.01362	9510576000
9	16/1	Circlip I47	7	8.5.2.01290	
10	16/1	Bearing 6204	7	8.0.1.00405	ABI 271
11	16/1	Cylindrical Gear Z=22, M1.5	1	0.735.5001.00	
12	16/1	Cylindrical Gear Z=24, M1.75	1	0.744.5015.00	0744240100
13	16/1	Shaft (turbine shaft 0.744.2401.00)	1	0.744.2009.00	
14	16/1	Key 5x5x20	1	8.4.1.01617	
15	16/1	Key	1	0.744.7100.00	
16	16/1	Cover	1	2.744.1310.00	
17	16/1	Spacer 32x20.3x2.5	2	0.104.7525.00	
18	16/1	Oil Seal 20x47x7	2	8.7.3.01395	RIAT36
19	16/1	Spacer 35.3x25.6x1.0	1	0.100.7510.00	
20	16/1	Spacer 40.3x46.7	2	0.457.7500.00	
21	16/1	Spacer	1	0.744.7104.00	
22	16/1	Pinion Shaft Z=12, M1.5	1	0.744.5011.00	
23	16/1	Pinion Shaft Z=14, M1.75	1	0.744.5009.00	
24	16/1	Spacer 44x30.3x1	1	0.102.7510.00	
25	16/1	Spacer 20.5x34.8x1	1	0.742.7510.00	
26	16/1	Pinion Shaft Z=10, M2	1	0.745.5005.00	
27	16/1	Gear with Bearing 6206	1	2.744.6010.00	
28	16/1	Pinion Shaft Z=10, M3	1	0.745.5000.00	
29	16/1	Oil Plug 72x10	2	8.7.0.00744	DO27631
30	16/1	Circlip I72	3	8.5.2.00131	
31	16/1	Bearing 6207	3	8.0.1.00870	ABI 289
32	16/1	Circlip E35	3	8.5.1.00005	
33	16/1	Shaft	1	0.745.3000.00	
34	16/1	Crown Gear Z=46, M3	1	0.745.6000.00	
35	16/1	Key 10x8x30	1	8.4.1.00993	
36	16/1	Ring with Keyway H=2.5 I.D.35	2	8.5.1.00583	
37	16/1	Oil Seal 35x72x10	1	8.7.3.00055	ABI 559
38	16/1	Key 8x7x16	1	8.4.1.01041	
39	16/1	Crown Gear Z=67, M2	1	0.745.6002.00	
40	16/1	Circlip I52	2	8.5.2.00038	
41	16/1	Oil Plug 52x7	1	8.7.0.00693	9510600000
42	16/1	Bearing 6205	2	8.0.1.00034	ABI 287
43	16/1	Bushing	1	0.744.7000.00	
44	16/1	Spacer	1	0.744.7106.00	
45	16/1	Ring with Keyway H=2 I.D. 30	1	8.5.1.01082	
46	16/1	Circlip E25	1	8.5.1.00004	
47	16/1	Oil Seal 8x22x7	1	8.7.3.01396	

GEARBOX D-745A (9.745.044.00)



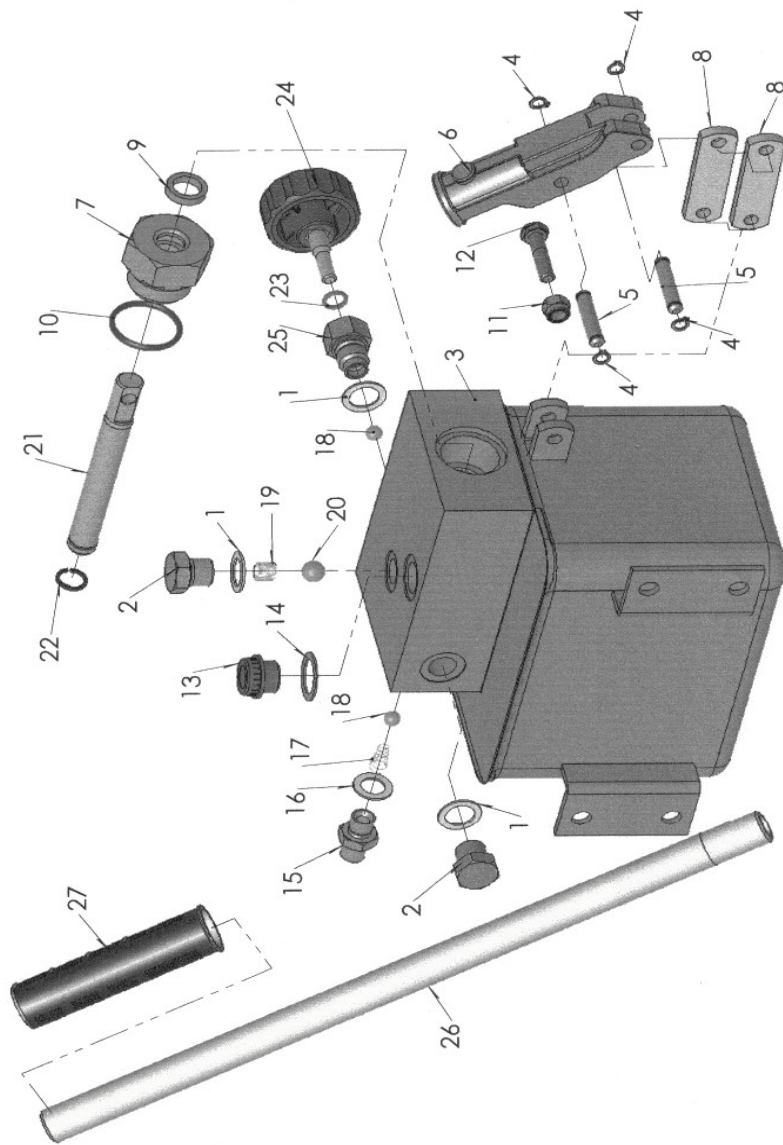
POS.	Page	Description	N.Pieces	Item Number	Notes
48	16/1	Cap	1	0.735.7104.00	
49	16/1	Cover	1	0.735.1300.00	
50	16/1	Bolt TCEI M8x12 (8.8)	2	8.1.2.01718	
51	16/1	Key	1	0.744.7101.00	
52	16/1	Gear	1	2.744.5007.00	
53	16/1	Crown Gear Z=58, M1.5	1	0.744.6003.00	
54	16/1	Plug 3/8" GAS	1	8.6.5.00006	
55	16/1	Oil Plug	1	8.7.0.00743	9510651000
56	16/1	Circlip I62	2	8.5.2.00007	
57	16/1	Bearing 6007	2	8.0.1.00000	CP35016
58	16/1	Spacer 48x35.3x1.3	1	0.259.7513.00	
59	16/1	Gear Z=28, M2	1	0.745.6001.00	
60	16/1	Key 10x8x16	1	8.4.1.01658	
61	16/1	P.T.O. Shaft 1-3/8"-6 spline	1	0.745.3001.00	
62	16/1	Oil Seal 35x62x10	1	8.7.3.00003	9020265000
63	16/1	Brake Hub	1	0.744.7004.00	
64	16/1	Spring	1	0.735.7103.00	
65	16/1	Washer 8.4x14	2	8.3.2.00439	
66	16/1	Brake Band	1	2.744.7006.00	
67	16/1	Threaded Knob M8-F	1	8.9.1.01713	
68	16/1	Brake Pin	1	0.744.7005.00	
69	16/1	Key 10x8x25	1	8.4.1.00232	
70	16/1	Lever	1	2.744.7002.00	
71	16/1	O-Ring 3062	2	8.7.6.00191	
72	16/1	Spring Washer 40x20.4x1.5	1	8.5.5.01316	
73	16/1	Cotter Pin 4x35	1	8.4.7.00760	
74	16/1	Castle Nut M20x1.5	1	8.2.2.00997	
75	16/1	Rollpin 5x24	1	8.4.5.00934	
76	16/1	Handle Grip	1	1.721.7002.00	
77	16/1	Ball 5/16" 7.9 mm	2	8.5.9.00166	
78	16/1	Plug 1/2" GAS	1	8.6.7.00269	
79	16/1	Lever x I.D.	1	2.744.7013.00	
80	16/1	Locking Nut M20x1.5	1	0.744.7105.00	
81	16/1	Spacer 32x20.3x1	1	0.104.7510.00	
82	16/1	Crown Gear Z=35, M1.75	1	0.744.6007.00	
83	16/1	Key 5x5x10	1	8.4.1.01511	
84	16/1	Gear Z=15, M3.5	2	0.744.6008.00	



TACHOMETER VDO EURO/SPRINT



POS.	Page	Description	N.Pieces	Item Number	Notes
1	22	Tachometer VDO Euro/Sprint	1	5800501	
2	22	Velocity Sensor Complete	1	5800508	
3	22	Battery	1	5800504	
4	22	Circlip E8	1	5800503	
5	22	Bushing	2	5800502	
6	22	Sensor Support	1	5800052	
7	22	Velocity Sensor Shaft	1	5800054	
8	22	Magnet Support	1	5800053	
9	22	Magnet	3	5800505	
10	22	Nut/Nylock M5	1	5800211	
11	22	Bolt TCEI M5x12	2		
12	22	Single Magnet Support	1	8900034	
13	22	Magnet VDO	1		
14	22	Bracket	1	8900105	
1		\\			
2	22	Tachometer Complete (Euro)	1	TACHVDOEURO	
3		/			
		/			
1		\\			
3		\\			
12	22	Tachometer Complete (Sprint)	1	TACHVDOSPRINT	
13		/			
14		/			



HYDRAULIC HAND PUMP GLSE16



POS.	Page	Description	N.Pieces	Item Number	Notes
1	10045	Copper Washer 3/8"	3	Rond RM Øi 3-8"	
2	10045	Plug 3/8" GAS zinc	2	10001-10	
3	10045	Pump Body	1	10045-7	
4	10045	Circlip E8	4	S.a. Ø8	
5	10045	Pin zinc	2	10001-15	
6	10045	Pivot Arm	1	10007-24	
7	10045	Plunger Plug	1	10071-16	
8	10045	Bracket	2	10017-9	
9	10045	Gasket	1	csc 2216	
10	10045	O-Ring 4150	1	OR 4150	
11	10045	Locking Nut M8	1	DadoA-M8	
12	10045	Bolt TE M8x35	1	VITE TE M8x35	
13	10045	Oil Plug 1/2" GAS	1	TCN12-ia	
14	10045	Fiber Washer 1/2"	1	Rondella feltro	
15	10045	Nipple 1/4"-1/4"	1	Niples 1-4" 1-4"	
16	10045	Copper Washer 1/4" GAS	1	Rond RM Øi 1-4"	
17	10045	Conical Spring	1	10052-3	
18	10045	Chrome Ball 9mm	2	Sfera Ø9	
19	10045	Spring	1	10003-4	
20	10045	Chrome Ball 1/2"	1	Sfera Ø1-2"	
21	10045	Chrome Plated Piston	1	10045-13	
22	10045	Metal Ring	1	An.Arresto Ø16	
23	10045	O-Ring 112	1	OR 112	
24	10045	Knob	1	10004-1	
25	10045	Knob Coupler	1	10006-15	
26	10045	Command Lever	1	Leva 430	
27	10045	Rubber Grip Ø25	1	AV1014D210	
9		\\			
10		\\			
22		Rebuild Kit	1	GLSE16KIT	
23		/			
		/			