

# MICRO 32



POS.	Page	Description	N.Pieces	Item Number	Notes
1	101	Frame Complete 32/90	1	3001001	
2	101	Reel for Micro 32/90	1	3001002	c.56
3	101	Drawbar	1	3000019	
4	101	Pin / Drawbar Ø 8	1	3000117	
5	101	Chain 3/8" S	1	4000101	.96 meters
6	101	Handle / Brake Ø 40 M8	1	3000115	
7	101	Washer Ø 9x24 zinc	2	3000113	
8	101	Spring / Galvanized	1	3000017	
9	101	Bolt M8x170 UNI 5732	1	3000114	
10	101	Spacer PVC	1	3000015	
11	101	Bolt M10x60	1	3000124	
12	101	Nut / Lock M10	1	3000125	
13	101	Wheel 4.00x8 2Ply nylon	2	3000112	
14	101	Washer Ø 26x44	2	3000126	
15	101	Circlip E 25	2	3000111	
16	101	Cover / Primary Chain ABS	1	3000025	
17	101	Bolt M6x10	2	4010108	
18	101	Washer 6x16	2	4010109	
19	101	Bar / Shut Off	1	3001010	
20	101	Clamp / Cable	1	2000124	
21	101	Cable / Acquastop Shut Off	1	2000116	
22	101	Skid / Gun mod.300	1	3000027	
23	101	Bushing 1"MNPT-3/4"FNPT	1	3000119	
24	101	Chain	1	CATGENOV	1.1 meter/op
25	101	S-Hook	1		op
26	101	Cap / Rubber F Ø 21	1		op
27	101	Frame / Trolley Support	1	3000028	op
28	101	Bolt M10x20	2	3000122	
29	101	Washer / Lock Ø 10 UNI 6798	2	3000123	
30	101	Tensioner / Primary Chain	1	3000026	
31	101	Shaft / Hoseguide	1	3000022	
32	101	Cursor	1	3000023	
33	101	Finger / Cursor Ø 22	1	3000024	
34	101	Zirk / Grease			
35	101	Circlip I 22	1	3000108	
36	101	Connector / PET Hose-Trolley PE Ø 32	1	3000029	
37	101	Clamp Ø 32 art.35	1	3000118	
38	101	Hose / PET BD Ø 32 PN 6	1	TUBOPEBD32	1.90 meters
39	101	Hosebarb x Thread 1/4" MNPT x 13ht	1	3000121	
40	101	Valve / Ball 1/4" M+F	1	2000112	
41	101	Piston C40 complete	1	CILINDROC40	v.pag.88
42	101	Clamp ABA 25	4	2000111	
43	101	Lever / Drive	1	2000006	
44	101	Lever / Anti-Return	1	2000005	
45	101	Tube Ø 13x19,5	2	2000110	.53 meters
46	101	Hosebarb / Threaded 1/2" M 90° x 13ht PVC	1	2000119	
47	101	Filter / Complete 1/2" F 100 Mesh	1	2000118	

# MICRO 32

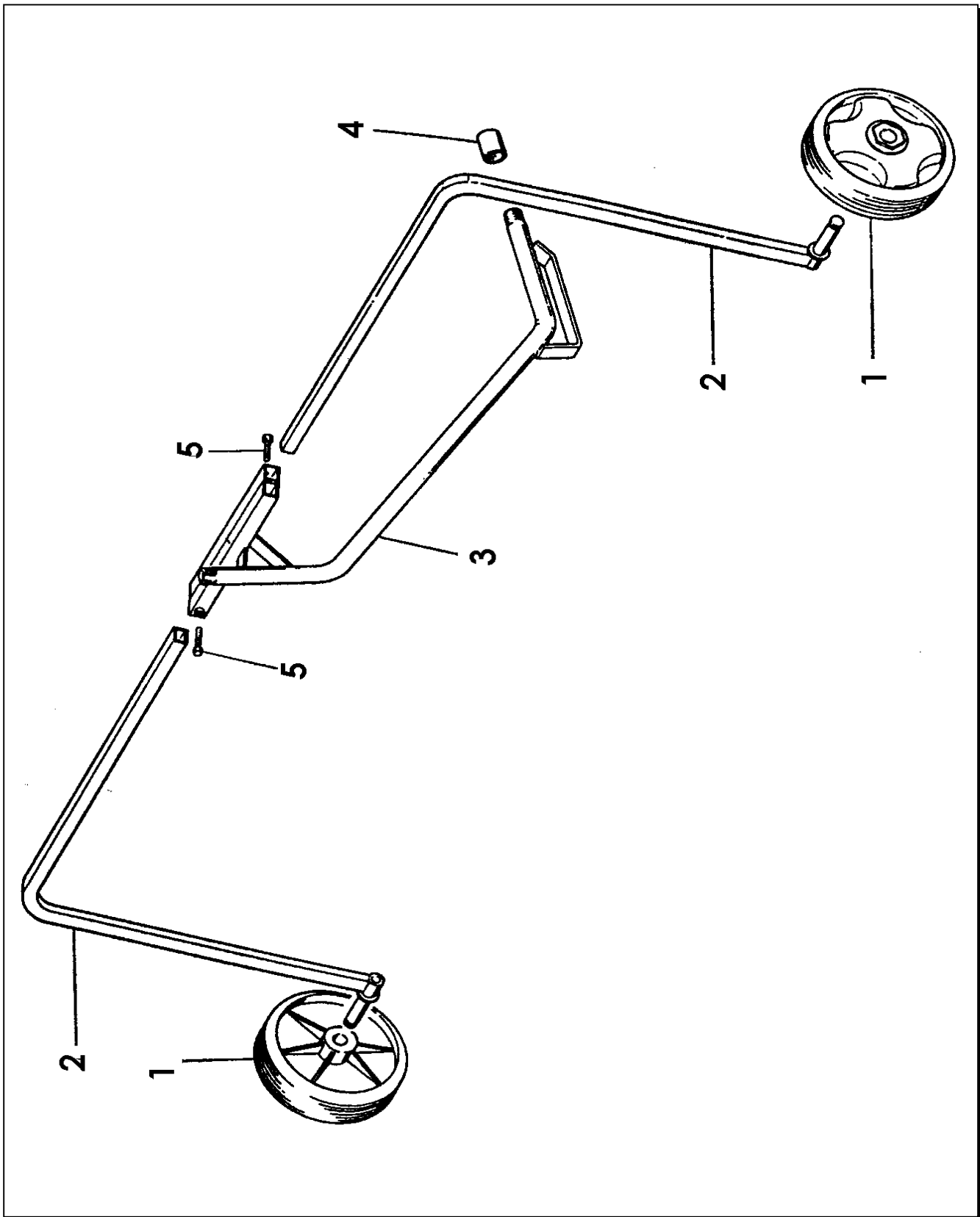


POS.	Page	Description	N.Pieces	Item Number	Notes
48	101	Hosebarb / Threaded 1/2" M dritto PVC	1	2000125	
49	101	Bolt TE M8x70	2	3000132	
50	101	Washer Ø 8	2	2000107	
51	101	Nut / Hex M8	2		
52	101	Acquastop 300/400 complete	1	ACQUAST300400	v.page.89
53	101	Gauge / Pressure 1/8" 0-12 bar (0-175psi)	1	3000110	
54	101	Coupler / Swift Quick DN 27	1	2000102	c.55
55	101	Gasket / Swift Quick Coupler	1		c.54
56	101	Sprocket 18T 3/8" S	1	3000134	gr
57	101	Clamp Ø 32 art.35	1	3000118	
58	101	Circlip E 40	1	3000103	
59	101	Ring / Sealing	1	3000101	
60	101	Bearing	1	CUS60082RS	
61	101	Circlip I 68	1	3000109	
62	101	Spring / S.S.	1	2000009	
63	101	Washer	1	2000107	
64	101	O-Ring	2	2000210	
65	101	Cover	1	3000014	
66	101	O-Ring	1	3000107	
67	101	Circlip I 40	1	3000106	
68	101	Lever / Command	1	3000016	
69	101	Washer / S.S. 5,5x25x1	1	3000021	
70	101	Diaphragm / Rubber	1	3000013	
71	101	Washer / Aluminum	1	3000012	
72	101	Hosebarb x Thread 1/4" MNPT x 13ht	1	2000108	
73	101	Washer / Locking	1	3000129	
74	101	Nut / Lock M5	1	2000207	
75	101	Body / Acquastop	1	3001006	
76	101	Coupler / Swift Quick 1"1/4 M	1	4010133	
77	101	Cap / Piston C40	1	2000215	
78	101	Ring / Center Sealing	1	2000205	
79	101	O-Ring	1	2000210	
80	101	Shaft / Piston C40	1	2000204	
81	101	Washer / S.S.	1	2000206	
82	101	Plunger / Piston C40	1	2000202	
83	101	O-Ring	1	2000212	
84	101	Diaphragm / Rubber	1	2000213	
85	101	Nut / Lock	1	2000207	
86	101	Washer	1	2000208	
87	101	Circlip	1	2000209	
88	101	Plate / Piston Cylinder C40	1	2000203	
89	101	O-Ring	1	2000211	
90	101	Hosebarb x Thread 1/4" MNPT x 13ht	1	2000108	
91	101	Body / Piston C40	1	2000201	
92	101	O-Ring	1	2000212	
93	101	Gun Sime Funny	1	GETFUNNY	

MICRO 32



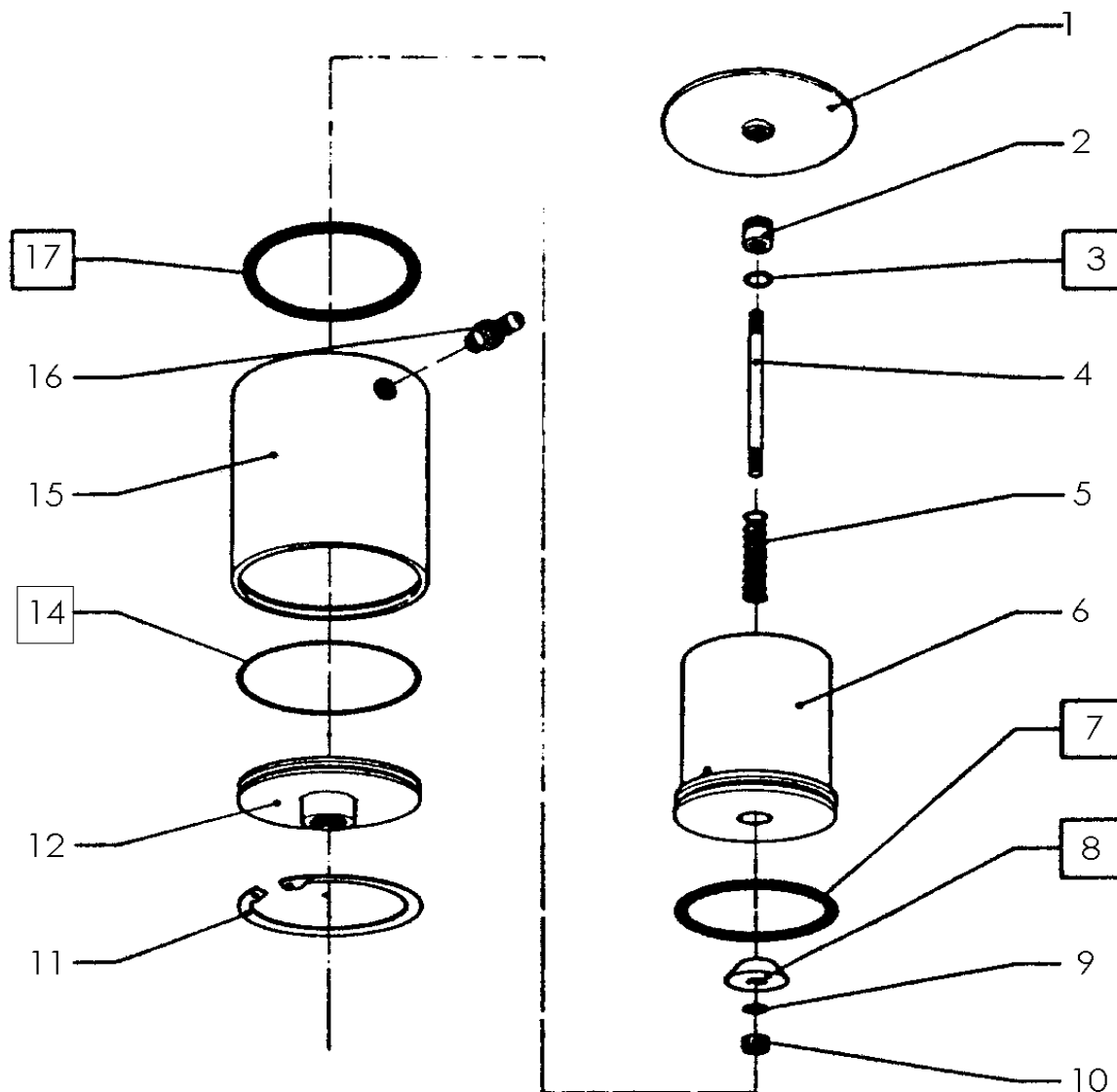
POS.	Page	Description	N.Pieces	Item Number	Notes
62					
63					
64					
65					
66					
67					
68	101	Kit / Rebuild Acquastop 300/400	1	TAPPO300400	
69					
70					
71					
72					
73					
74					
79					
83					
84	101	Kit / Piston Seal C40	1	GUARNC40	
89					
92					



# MICRO 32 TROLLEY



POS.	Page	Description	N.Pieces	Item Number	Notes
1	106	Wheel	2	2000115	
2	106	Trolley Lag	2	3000302	
3	106	Trolley Body	1	3000301	
4	106	Coupling 3/4" NPT	1		
5	106	Bolt M10x25	2	4000111	

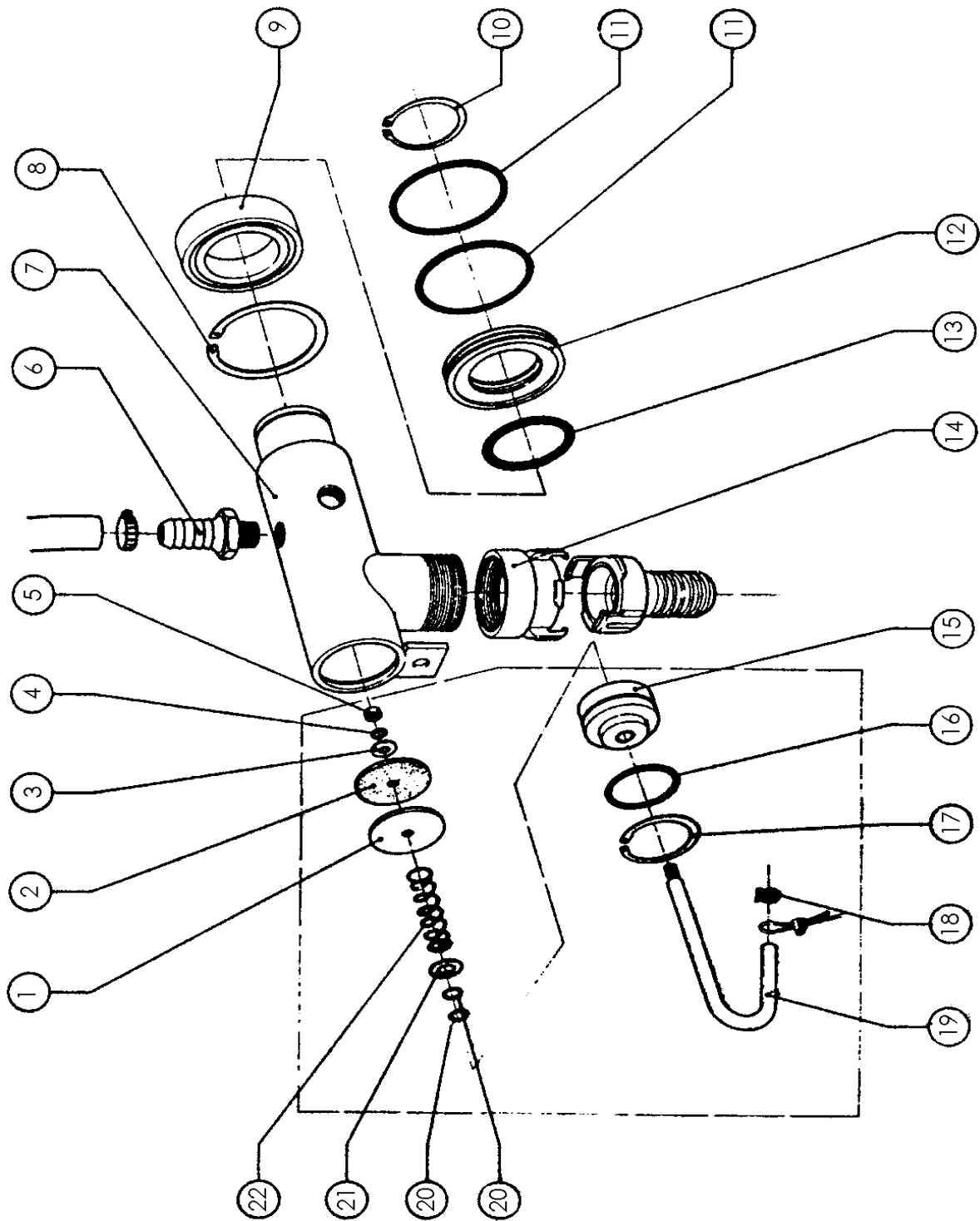


# C-40 PISTON ASSEMBLY



POS.	Page	Description	N.Pieces	Item Number	Notes
1	88	Piston Cap C40	1	2000215	
2	88	Center Sealing Ring	1	2000205	
3	88	O-Ring	1	2000210	
4	88	Piston Shaft C40	1	2000204	
5	88	Spring S.S.	1	2000206	
6	88	Piston Plunger C40	1	2000202	
7	88	O-Ring	1	2000212	
8	88	Sealing Grommet	1	2000213	
9	88	Washer M5	1	2000208	
10	88	Nut/Nylock M5	1	2000207	
11	88	Circlip	1	2000209	
12	88	Cylinder Plate C40	1	2000203	
14	88	O-Ring	1	2000211	
15	88	Piston Body C40	1	2000201	
16	88	Adapter 1/4" mnpt x 13 mm Hosebarb	1	2000108	
17	88	O-Ring	1	2000212	
3		\ \ Piston Seal Rebuild Kit C40 / /	1	GUARNC40	
7					
8					
14					
17					





# AQUASTOP ASSEMBLY



POS.	Page	Description	N.Pieces	Item Number	Notes
1	89	Aluminum Washer	1	3000012	
2	89	Rubber Diaphragm	1	3000013	
3	89	Washer S.S. 5.5x25x1	1	3000021	
4	89	Lock Washer M5	1	3000129	
5	89	Nut/Nylock M5	1	2000207	
6	89	Threaded Hosebarb 1/4" mnpt x 13 mm hosebarb	1	2000108	
7	89	Body	1	3001006	
8	89	Circlip I68	1	3000109	
9	89	Bearing 6008-2RS	1	CUS60082RS	
10	89	Circlip E40	1	3000103	W29942
11	89	O-Ring 3250	2	3000102	
12	89	Spacer	1	3000020	
14	89	Swift Coupler 1-1/4"	1	4010133	
15	89	Cover	1	3000014	
16	89	O-Ring 3137	1	3000107	
17	89	Circlip I40	1	3000106	9010270000
18	89	Cable Clip	1	2000124	
19	89	Command Lever	1	3000116	
20	89	O-Ring 2031	2	2000210	
21	89	Washer M8	1	2000107	
22	89	Spring S.S.	1	2000009	