

DODDA[®] U.S.A. INC.



**INNOVATIVE
DEDICATED
DRIVEN**



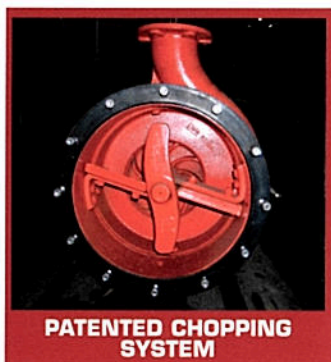
**HORIZONTAL
CHOPPER PUMPS** **AFI**

AFI

HORIZONTAL PTO PUMPS

- Unsurpassed in durability and longevity
- User friendly design
- Slurries with heavy solids, straw, weeds, sticks, bones etc. are typically no problem.
- Heavy duty gear boxes are available in 540 or 1000 rpm with variety of gear ratios.
- Heavy duty PTO's with shear bolts are standard.

All DODA AFI pumps feature a nodular cast iron housing, not welded components. Our venture design aids in accelerating waste moving through the housing. Combined with our high speed impeller and adjustable pressure plate, DODA pumps are unsurpassed in pump performance.



**PATENTED CHOPPING
SYSTEM**

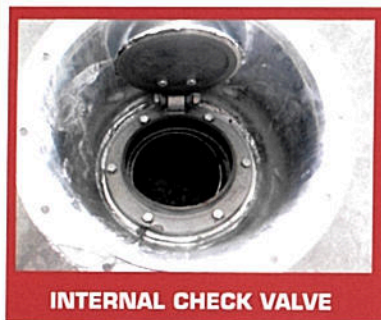
The "PATENTED" chopping system consisting of two static and one rotating chopper blade handles the most challenging solids. Blades are made of a special vanadium and manganese alloy for durability. The waste then passes to the high speed impeller system that utilizes a adjustable pressure plate that chops the waste again. The

system is an open impeller system allowing it to handle the most difficult waste.

DODA pumps chopping feature assure the waste is properly conditioned assuring less plug ups in the field when being injected or irrigated.

The intake (suction) cone has an internal check valve built in that holds the pumps prime during periodic shutdowns allowing start up with out re-priming again

Intake cones are available for 6" and 8" suction hoses. Adapters are also available to connect AFI direct to storage unit.



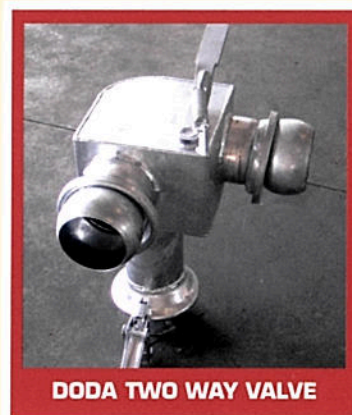
INTERNAL CHECK VALVE

DODA's Power Priming System assures fast priming from deep depths and works great with thick slurries. Manual primers are also available.



POWER PRIMER SYSTEM

Several discharge options are available; 1.) Tee manifold with one or two valves is popular for agitating and loading transport units. Simply switch from valve to valve while pump is running.



DODA TWO WAY VALVE

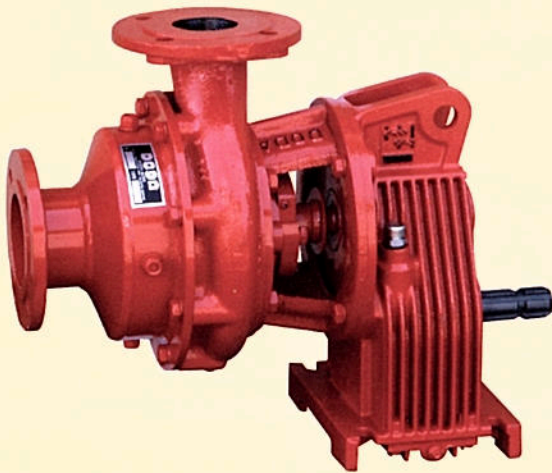
2.) DODA's two way valve allows you to discharge off either side of the pump and its design is a fail safe if pump is left unattended for long periods. The unique design utilizes pumps pressure to keep one side of valve shut while discharging out the other. This valve

cannot be switched when pump is running.

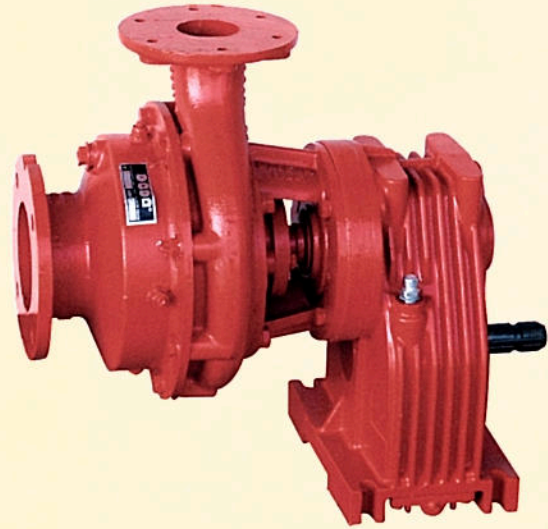
- Two wheel trailer or a two point hook up are available to attach pump to tractor
- Chrome plated shaft at seal system location.

DODA's tungsten-carbide seal system is long lasting and the pump support separates the pump from gear box. In the unlikely event of a seal failure the gear box is safe. NEW OIL BATH SEAL SYSTEM is now available. Should pump loose its prime and is unattended the seal system will not be damaged.

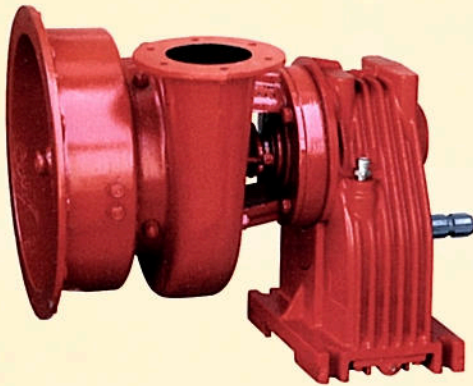
HORIZONTAL PTO PUMPS



AFI L20



AFI L24



AFI L25



AFI L27



AFI L35

All DODA AFI Pumps can be set up as Vertical Pumps if required or desired. Floating units also available in electric versions.

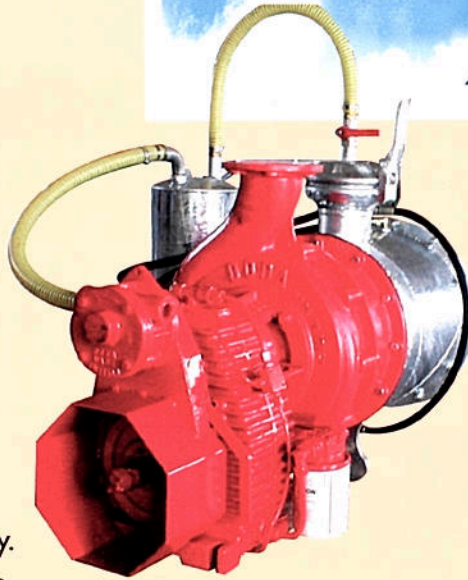
DODA U.S.A. Inc. carries a large variety of Hose, Coupler, Valves, Clamps, and a host over other items for your waste handling needs. Just call us.

Need some advice or second opinions on how you want to deal with your waste handling problems? Give us a call and we will gladly aid you in any way, we love on site consultations and helping with your design setups.

AFI

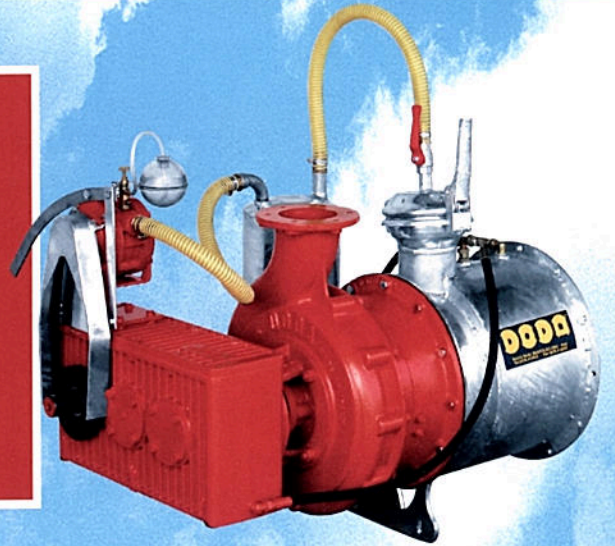
HORIZONTAL HD PTO PUMPS

- Same great features as all AFI Horizontal Pumps
- Specially designed for extremely heavy duty applications, requires a minimum 200HP.
- Oil cooled gear box standard
- Extra heavy duty undercarriage supplied as standard equipment.
- 8" or 10" suction intake required.
- Super duty PTO supplied as standard equipment 1000 RPM only.
- Power primer system is supplied as standard equipment.
- Ideal for Umbilical Systems or long irrigation runs.
- Designed for continuous duty.



SPECIAL GEAR BOX

Special gear box allows you to adapt to most any power source.



HORIZONTAL PEDESTAL PUMPS



- Same great feature as our PTO models set up for a direct power source.
- Pedestal pumps, drive shaft and bearings are in oil bath.
- Power primer is available in hydraulic and electric versions.
- DODA Pedestal Pumps can connect to diesel, gas, electric, or hydraulic motors

AFI PUMP PERFORMANCE CHART

| TYPE | RATIO | RPM | IMPELLER REV. | FLOW RATE Gal/min | | | | | | | | | | | | | | | | |
|--------------|---------|------|---------------|-------------------|-----|-----|-----|-----|-----|-----|-----|------|------|------|------|------|--|--|--|--|
| | | | | 106 | 158 | 211 | 265 | 396 | 528 | 660 | 793 | 1056 | 1320 | 1585 | 2377 | 3170 | | | | |
| AFI-L20 PTO | 1:6.417 | 540 | PSI | 115 | 109 | 105 | 88 | | | | | | | | | | | | | |
| | | | CV | 24 | 28 | 32 | 42 | | | | | | | | | | | | | |
| AFI-L24K | 1:6.2 | 540 | PSI | 150 | 145 | 140 | 116 | 70 | | | | | | | | | | | | |
| | | | CV | 68 | 70 | 75 | 80 | 86 | | | | | | | | | | | | |
| AFI-L24K | 1:4.93 | 540 | PSI | 85 | 81 | 80 | 68 | | | | | | | | | | | | | |
| | | | CV | 48 | 50 | 57 | 64 | | | | | | | | | | | | | |
| AFI-L24K | 1:1 | 3450 | PSI | 160 | 155 | 150 | 135 | 125 | 90 | | | | | | | | | | | |
| | | | CV | 50 | 55 | 60 | 68 | 80 | 95 | | | | | | | | | | | |
| AFI-L24/5K | 1:6.2 | 540 | PSI | 166 | 159 | 158 | 143 | 125 | | | | | | | | | | | | |
| | | | CV | 73 | 80 | 81 | 87 | 93 | | | | | | | | | | | | |
| AFI-L25 | 1:3.88 | 540 | PSI | | 58 | 57 | 55 | 51 | 42 | | | | | | | | | | | |
| | | | CV | | 35 | 36 | 38 | 41 | 43 | | | | | | | | | | | |
| AFI-L25 | 1:4.93 | 540 | PSI | | | 81 | 80 | 74 | 68 | 57 | | | | | | | | | | |
| | | | CV | | | 64 | 68 | 71 | 74 | 70 | | | | | | | | | | |
| AFI-L27 | 1:3.35 | 1000 | PSI | | | | 126 | 124 | 116 | 108 | 112 | 68 | | | | | | | | |
| | | | CV | | | | 102 | 105 | 108 | 112 | 118 | | | | | | | | | |
| AFI-L27 | 1:3.88 | 540 | PSI | | 80 | 78 | 74 | 68 | 58 | 43 | | | | | | | | | | |
| | | | CV | | 33 | 35 | 39 | 43 | 46 | 51 | | | | | | | | | | |
| AFI-L27 | 1:4.93 | 540 | PSI | | 129 | 127 | 124 | 117 | 108 | 94 | | | | | | | | | | |
| | | | CV | | 59 | 62 | 69 | 73 | 81 | 89 | | | | | | | | | | |
| AFI-L27 H.D. | 1:3.35 | 1000 | PSI | | 206 | 202 | 196 | 189 | 178 | | | | | | | | | | | |
| | | | CV | | 114 | 117 | 127 | 135 | 144 | | | | | | | | | | | |
| AFI-L27 H.D. | 1:3.31 | 824 | PSI | | | 129 | 136 | 129 | 118 | 104 | | | | | | | | | | |
| | | | CV | | | 78 | 85 | 93 | 100 | 108 | | | | | | | | | | |
| AFI-L35 | 1:2 | 1000 | PSI | | 119 | 114 | 109 | 102 | 82 | | | | | | | | | | | |
| | | | CV | | 69 | 73 | 78 | 82 | 87 | 96 | | | | | | | | | | |
| AFI-L35 | 1:3.88 | 540 | PSI | | | 133 | 131 | 128 | 122 | 116 | 99 | | | | | | | | | |
| | | | CV | | | 79 | 84 | 90 | 95 | 105 | 142 | | | | | | | | | |
| AFI-L35 H.D. | 1:2.38 | 1000 | PSI | | 173 | 169 | 163 | 158 | 151 | 142 | | | | | | | | | | |
| | | | CV | | 110 | 116 | 122 | 128 | 134 | 139 | | | | | | | | | | |
| AFI-L35 H.D. | 1:2.73 | 1000 | PSI | | | 216 | 216 | 215 | 211 | 199 | 170 | | | | | | | | | |
| | | | CV | | | 197 | 205 | 212 | 220 | 235 | 250 | | | | | | | | | |
| AFI-L35 H.D. | 1:3.05 | 910 | PSI | | | 216 | 216 | 215 | 211 | 199 | 170 | | | | | | | | | |
| | | | CV | | | 197 | 205 | 212 | 220 | 235 | 250 | | | | | | | | | |
| AFI-L35 H.D. | 1:3.31 | 824 | PSI | | | | 216 | 216 | 215 | 211 | 199 | 170 | | | | | | | | |
| | | | CV | | | | 197 | 205 | 212 | 220 | 235 | 250 | | | | | | | | |
| AFI-L20 PD | 1:1 | 3450 | PSI | | 105 | 90 | 60 | | | | | | | | | | | | | |
| | | | CV | | 30 | 34 | 40 | | | | | | | | | | | | | |
| AFI-L27 PD | 1:1 | 1500 | PSI | | | 37 | 34 | 27 | 14 | | | | | | | | | | | |
| | | | CV | | | 17 | 19 | 22 | 24 | | | | | | | | | | | |
| AFI-L27 PD | 1:1 | 2000 | PSI | | | 71 | 68 | 63 | 53 | 36 | | | | | | | | | | |
| | | | CV | | | 32 | 36 | 38 | 42 | 45 | | | | | | | | | | |
| AFI-L27 PD | 1:1 | 2500 | PSI | | | 112 | 109 | 104 | 95 | 80 | | | | | | | | | | |
| | | | CV | | | 52 | 57 | 63 | 70 | 76 | | | | | | | | | | |
| AFI-L20 PD | 1:1 | 3450 | PSI | | | | 205 | 200 | 195 | 185 | 155 | | | | | | | | | |
| | | | CV | | | | 145 | 150 | 170 | 185 | 210 | | | | | | | | | |
| AFI-L35 PD | 1:1 | 1500 | PSI | | | 67 | 64 | 61 | 55 | 47 | 14 | | | | | | | | | |
| | | | CV | | | 30 | 33 | 36 | 38 | 41 | 46 | | | | | | | | | |
| AFI-L35 PD | 1:1 | 2000 | PSI | | | 119 | 118 | 113 | 102 | 88 | 82 | | | | | | | | | |
| | | | CV | | | 69 | 73 | 78 | 82 | 87 | 96 | | | | | | | | | |
| AFI-L35 PD | 1:1 | 2500 | PSI | | | | 190 | 185 | 177 | 170 | 163 | | | | | | | | | |
| | | | CV | | | | 124 | 130 | 137 | 144 | 150 | 150 | | | | | | | | |
| AFI-L35 PD | 1:1 | 1000 | PSI | | | | | | | | 75 | 71 | 57 | 47 | 14 | | | | | |
| | | | CV | | | | | | | | | 42 | 65 | 75 | 110 | 130 | | | | |

CHECK OUT OUR OTHER GREAT PRODUCTS!

VERTICAL PUMPS



SUPER 120



SUPER 200



SUPER 150



SUPER ME 80

SEPARATORS

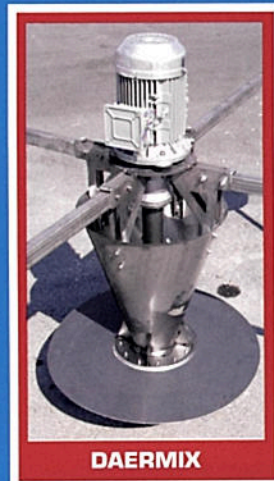


ROLLER PRESS

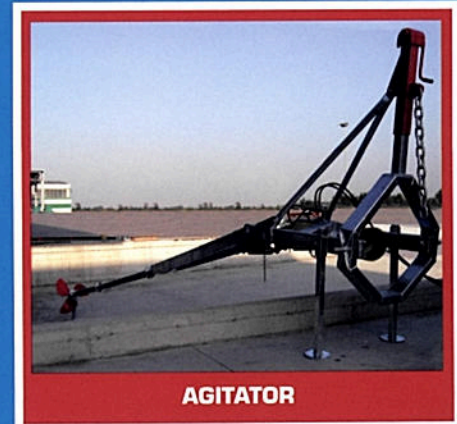


SCREW PRESS

MOVERD MIXERS



DAERMIX



AGITATOR

DODA U.S.A. INC.

255 16th Street South
P.O. Box 316
St. James, MN 56081

Tel: 507-375-5577 Fax: 507-375-5578
www.DODA.com